

Downloaded from
www.scottbouch.com

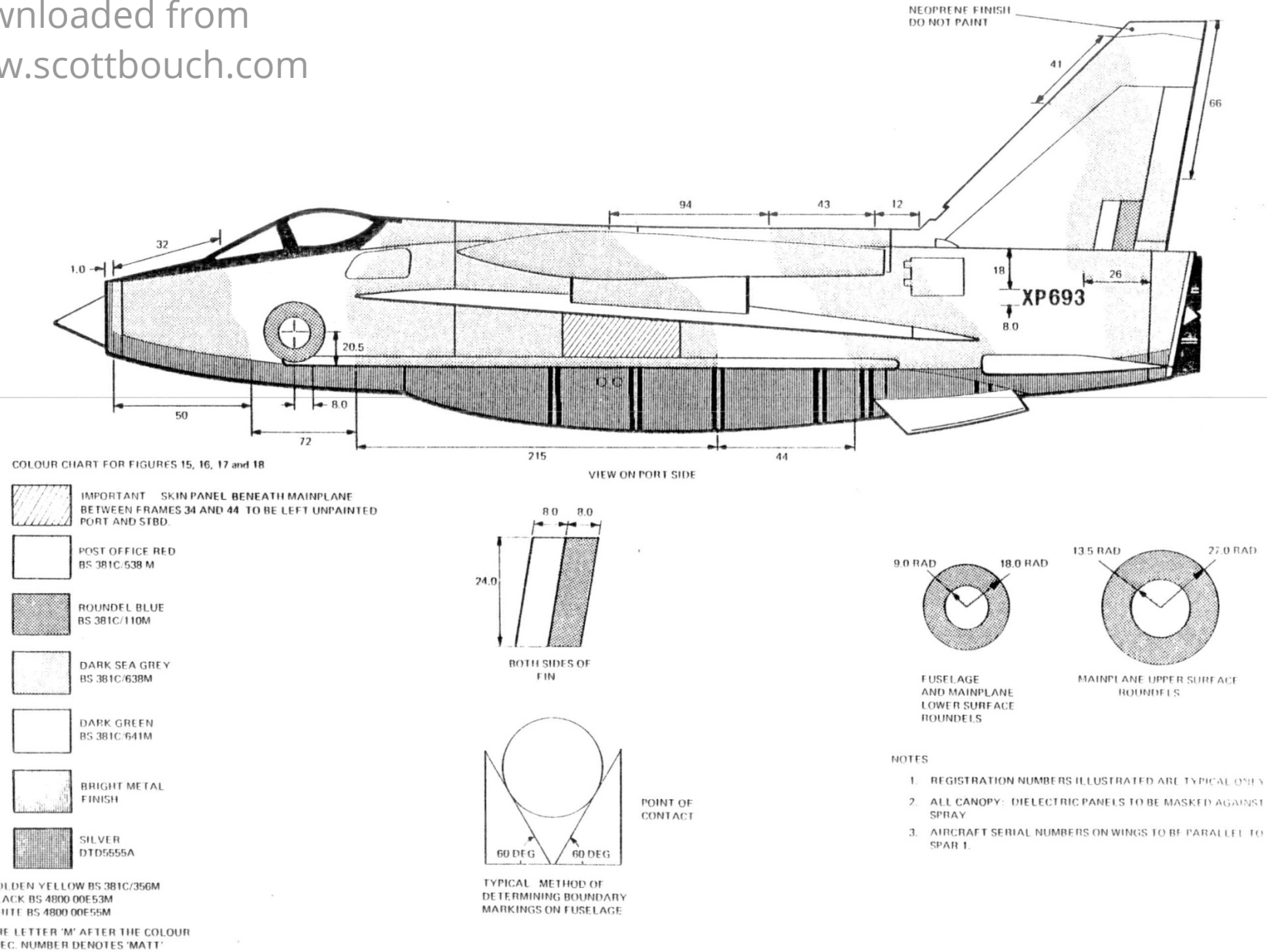
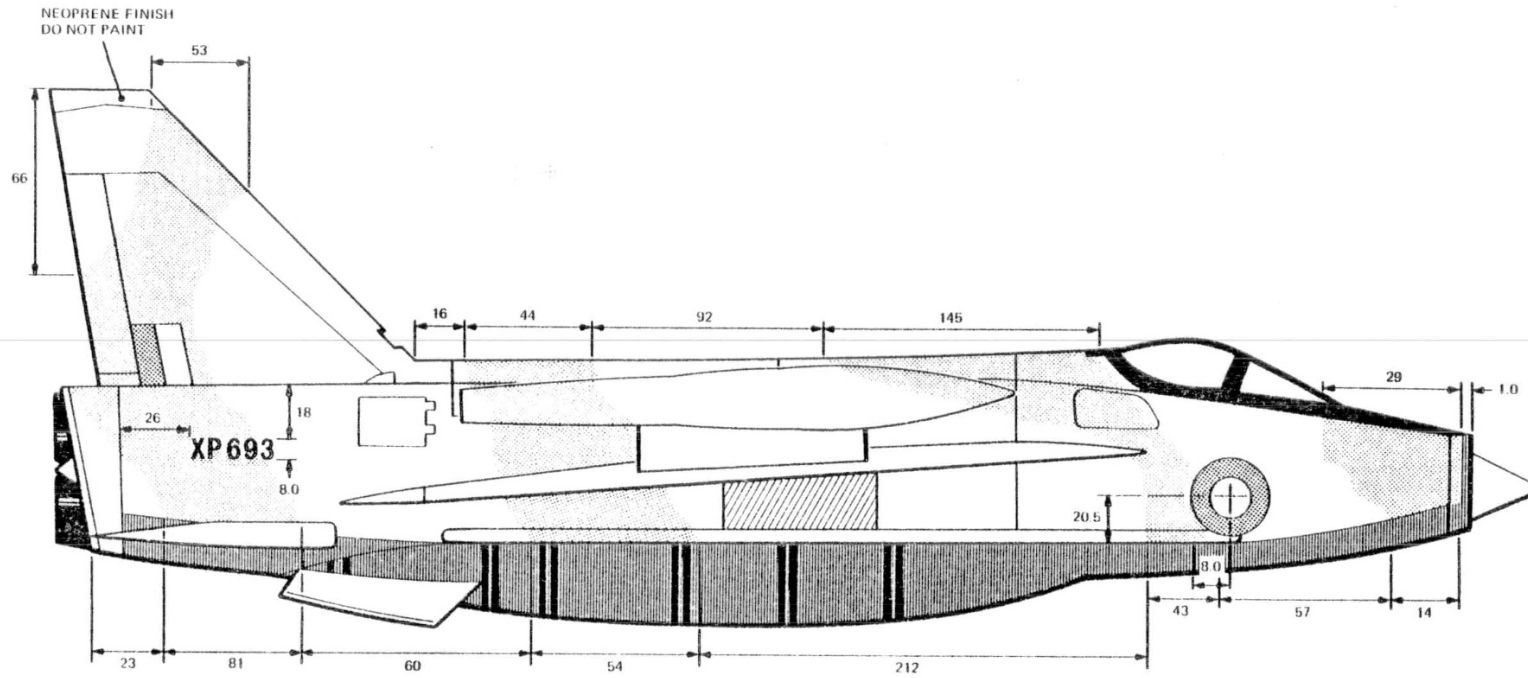


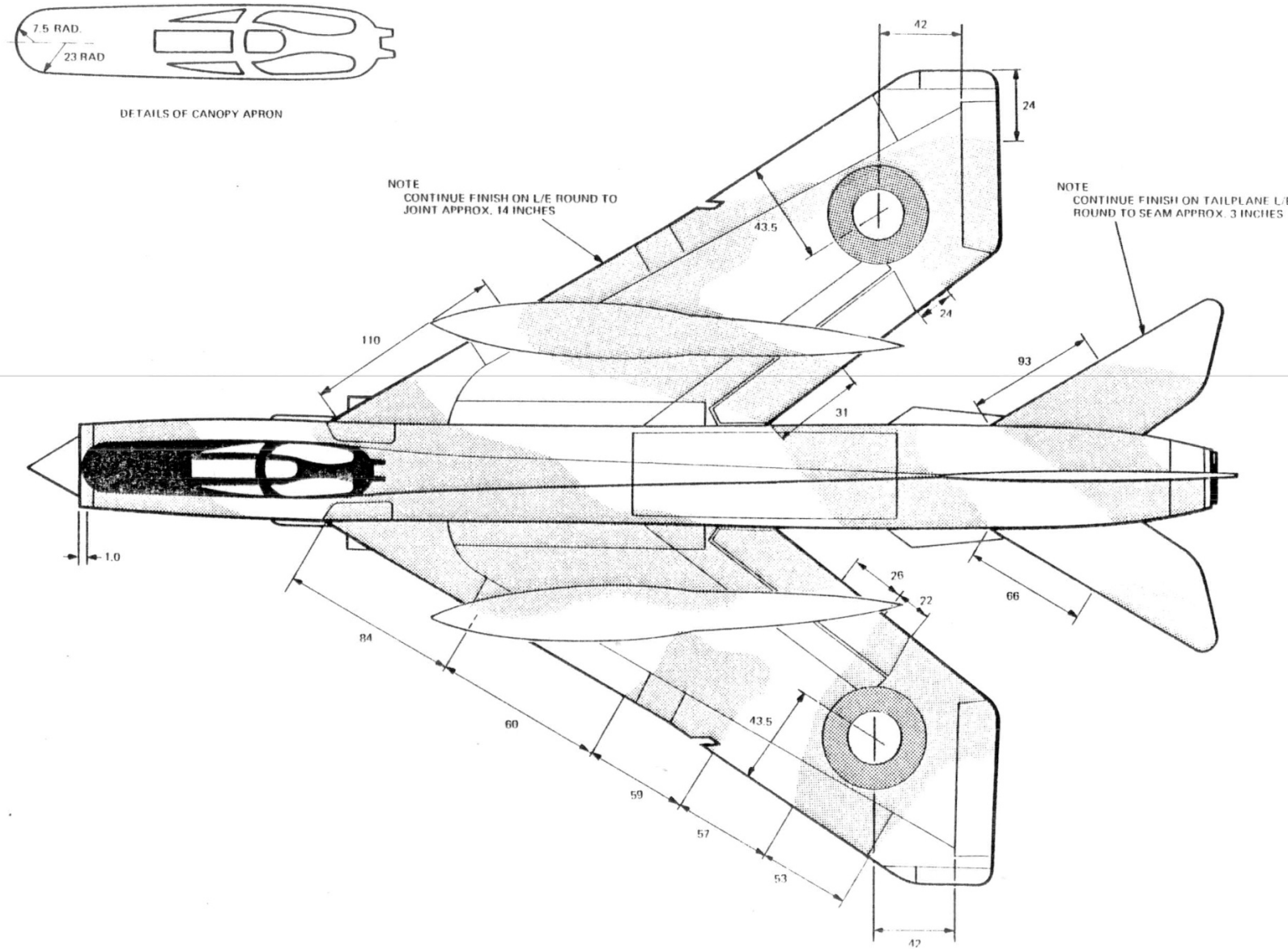
FIG. 16. CAMOUFLAGE~UPPER SURFACE~PORT SIDE AND COLOUR CODING



VIEW ON STARBOARD SIDE

NOTE . . . ALL DIMENSIONS IN INCHES

FIG. 17. CAMOUFLAGE~UPPER SURFACE~STARBOARD



NOTE ALL DIMENSIONS IN INCHES

FIG. 18. CAMOUFLAGE- UPPER SURFACE~ FUSELAGE, MAINPLANES AND TAILPLANE

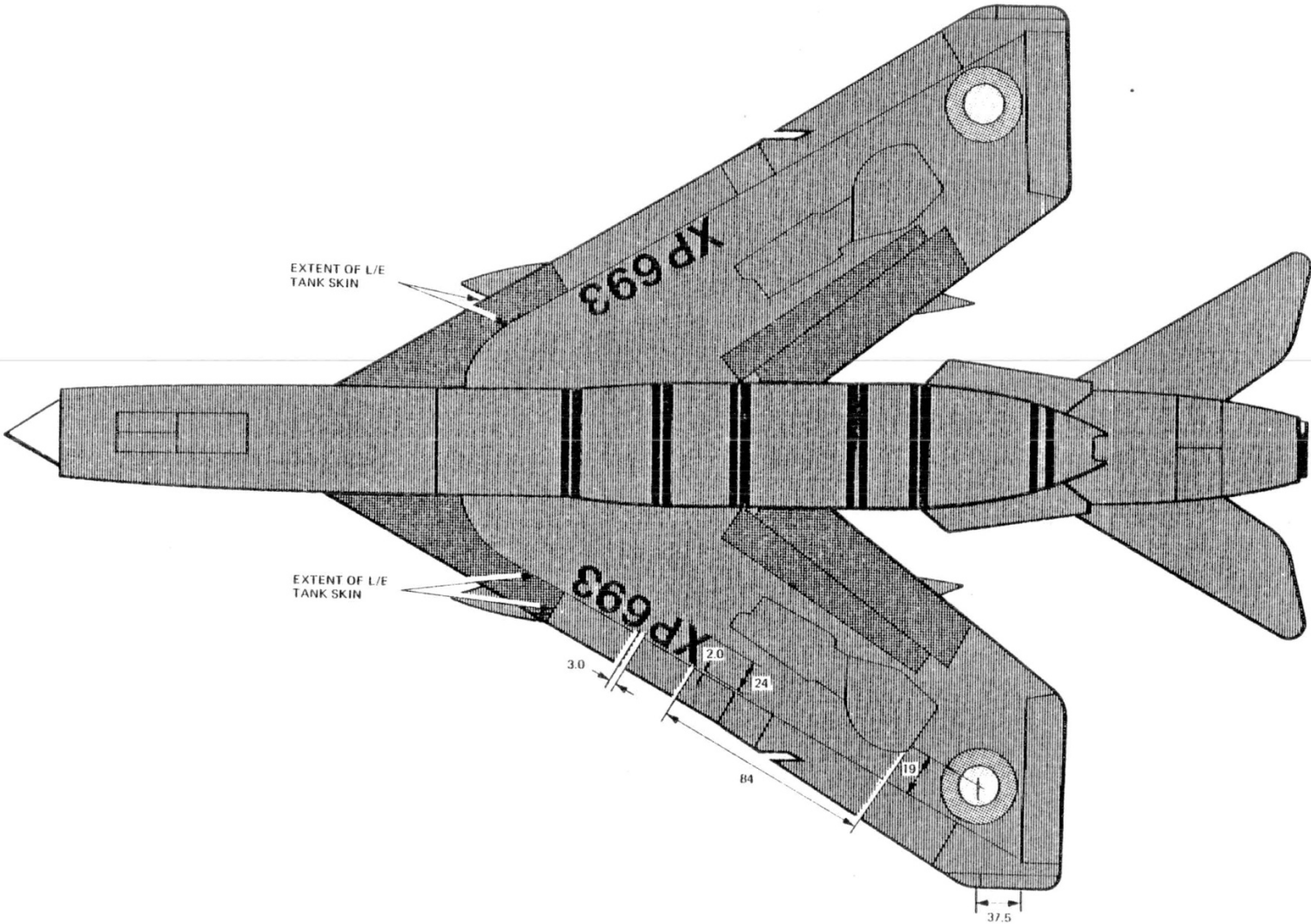
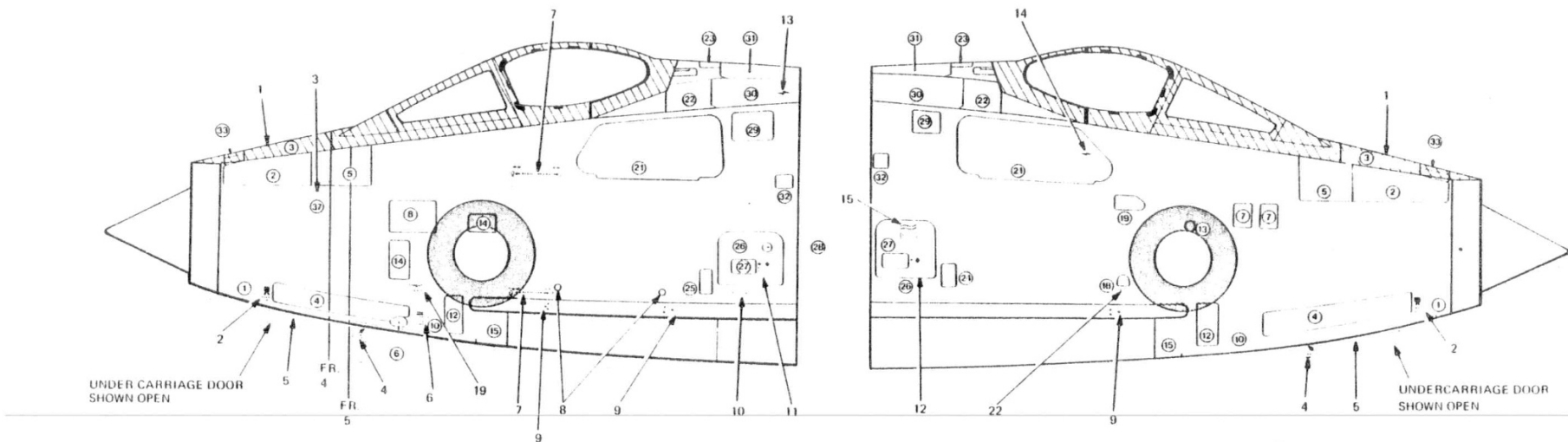


FIG. 19. LOWER SURFACE OF AIRCRAFT

NOTE: ALL DIMENSIONS IN INCHES

KEY TO FIG. 20 EXTERNAL MARKINGS - FRONT FUSELAGE - SERVICING

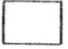




ITEM	LOCATION	DETAIL (Actual markings in BOLD capitals)
1	Canopy anti-glare apron	Paint panel ident numbers 3 and 33 black on a white background
2	Forward of nose undercarriage bay	JACKING POINT and TRESTLE HERE and Fig.28 detail A.
3	Between FR.4A and FR.5, port only	Fig. 28 detail B
4	Nose U/C door, outside surface, aft end.	Fig. 28 detail C
5	Nose wheel beam	Panel identification number 34 to be stencilled adjacent to access panels on nose wheel beam.
6	Aft of access panel No.6 above access panel No.10 port only	OXYGEN in black letters, USE NO OIL OR GREASE in red letters and Fig.28 detail D.
7	Aft of nose roundel, port only	Fig. 28 detail E.
8	Aft of nose roundel, below H.F.D., port only.	DATUM POINT aft of point at forward datum point and forward of datum point at aft position and Fig. 28 detail F.
9	On longitudinal beam forward end, port and starboard Aft end, port only	Fig. 28 detail G
10	Forward of FR.25, above longitudinal beam, port only.	AILN2 and AILN1 positioned around circumference of gauge point, Fig.28 detail H.
11	Forward of FR.25 on access panel No.26, port only.	Fig.28 detail J
12	Forward of FR.25 on access panel No.26, starboard only.	Fig.28 detail K
13	Forward of FR.25 above spine - fuselage intersection on access panel No. 30 port only.	Fig.28 detail L.
14	Below aft end of canopy, on access panel No. 21, starboard only.	Fig.28 detail M
15	Forward of FR.25 on access panel No.26 starboard only	Fig.29 detail A
16	Aft end of canopy on anti-glare black	HINGE FRICTION WASHERS KEEP FREE FROM LUBRICANT in 1/8 in. high white letters.
17	Top centre of aft canopy - forward slinging points	Fig.29 detail B

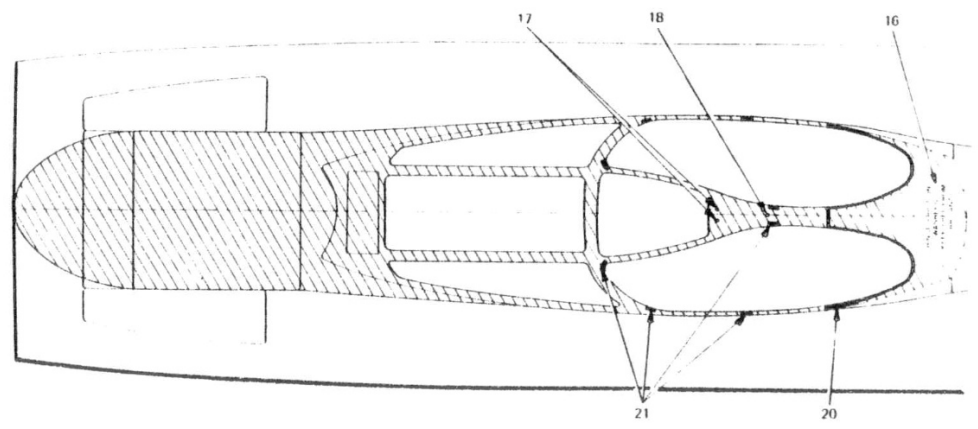


VIEW ON PORT SIDE

VIEW ON STARBOARD SIDE

COLOUR CHART

-  POST OFFICE RED
BS 381C:538 M
-  ROUND EL BLUE
BS 381C:110M
-  BLACK
BS 4800 00E53M
-  SILVER
DTD 5555A
-  GOLDEN YELLOW
BS 381C:356 M



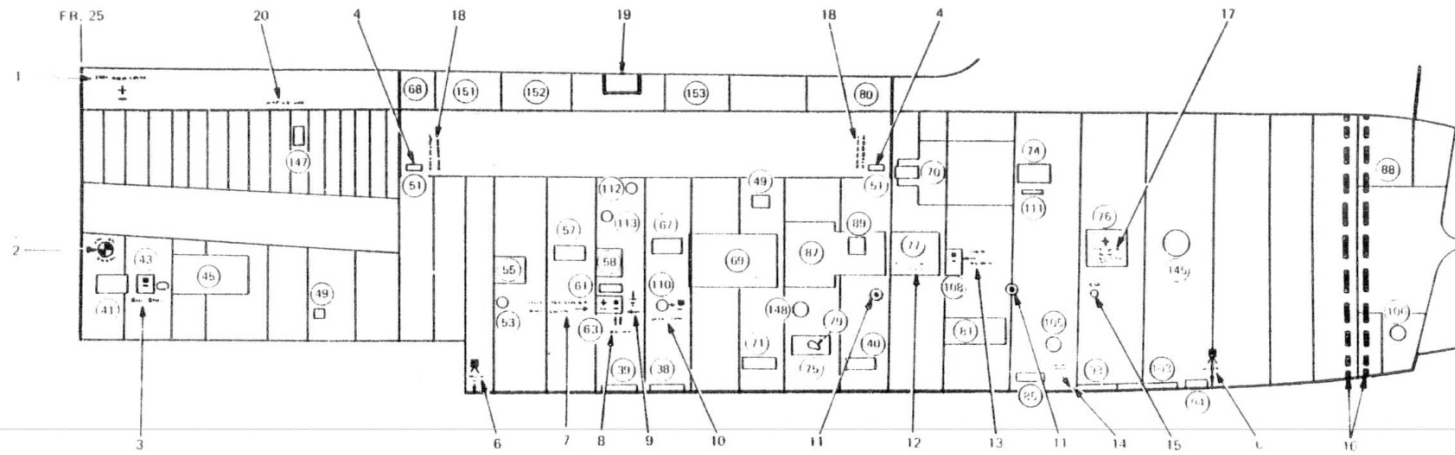
PLAN VIEW OF CANOPY AND APRON

NOTE ALL DIMENSIONS IN INCHES

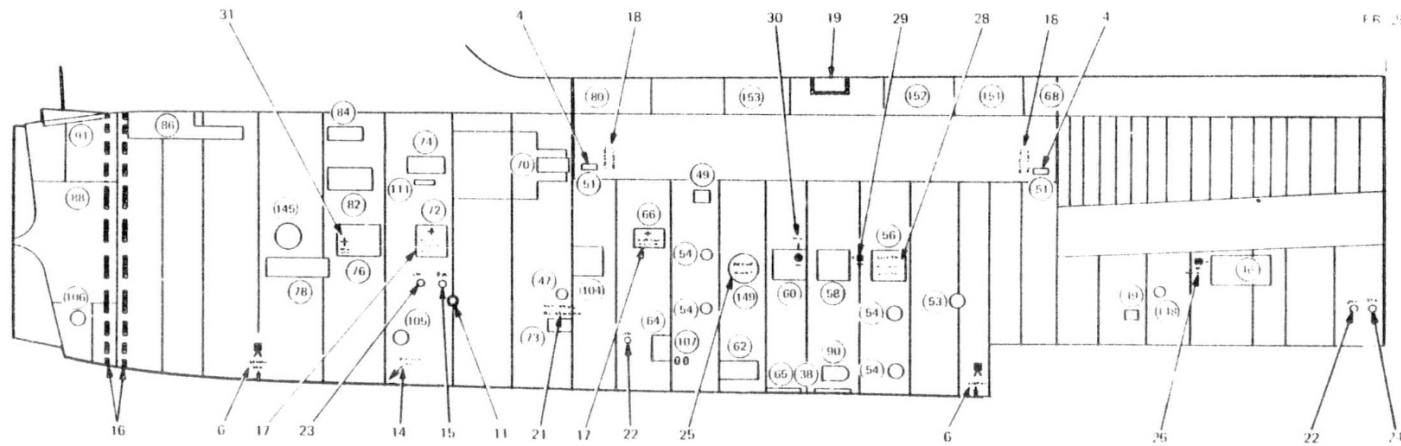
FIG. 20 EXTERNAL MARKINGS ~ FRONT FUSELAGE ~ SERVICING

KEY TO FIG.20 EXTERNAL MARKINGS - FRONT FUSELAGE - SERVICING continued

ITEM	LOCATION	DETAIL (Actual markings in BOLD capitals)
18	Top centre of aft canopy - aft slinging point	Fig.29 detail C
19	Forward of roundel - identification of surface finish	DTD 5580 above a ½ in. wide line, below the line TITANINE or alternative manufacturers initials or name of paint used.
20	Canopy	Edge with yellow line 1 in. wide - do not mark transparency
21	Canopy	Edge with 1 in. and ½ in. silver lines spaced at 18 in. intervals, corner to have 3 x 1 in. silver lines - do not mark transparency.
22	Between FR.14 and FR.15, port side only.	Fig.31 detail F.



VIEW LOOKING ON PORT SIDE OF REAR FUSELAGE



VIEW LOOKING ON STARBOARD SIDE OF REAR FUSELAGE

FIG. 21 EXTERNAL MARKINGS ~ REAR FUSELAGE ~ SERVICING

KEY TO FIG. 21 EXTERNAL MARKINGS - REAR FUSELAGE - SERVICING

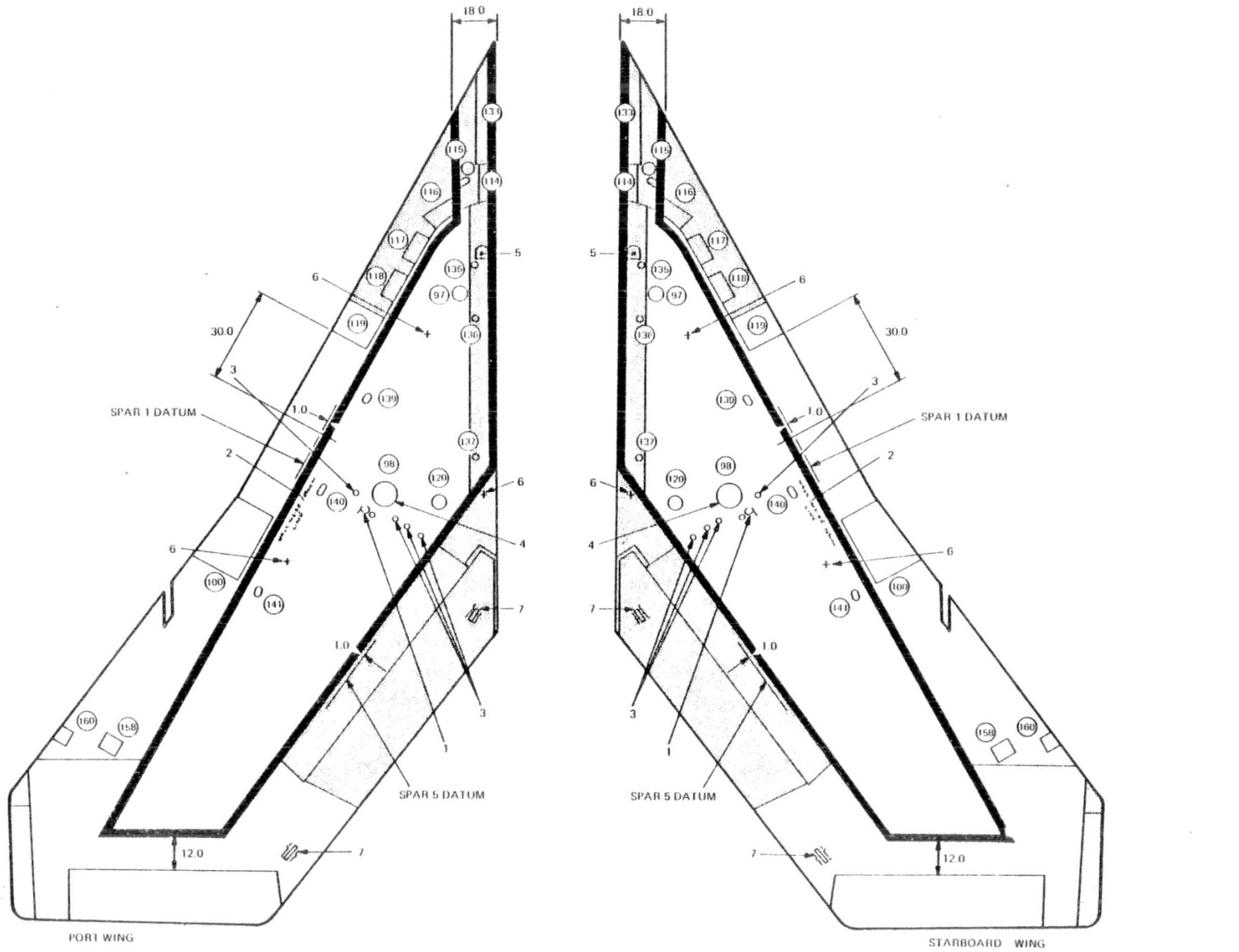
ITEM	LOCATION	DETAIL (Actual markings in BOLD capitals)
1	FR.25 to FR.29 on spine, port only	STARTER TANK INSIDE in 13/16 in. high letters and Fig.29 detail E.
2	Aft of FR.25 on H.F.D., port only	Fig.29 detail Q
3	Below leading edge wing root, FR.26 to FR.27 port only	REHEAT PUMP in 13/16 in. high letters below access panel No.43 and Fig.29 detail D on access panel No.43.
4	Upper engine hatch, forward and aft ends	Fig.30 detail D
5	Not used	
6	FR.44 and FR.59	TRESTLE HERE and Fig.28 detail A.
7	FR.46 to FR.48, port only	REFUEL 50 psi MAX 4 kg/cm ² 3.5 bars DEFUEL 11 psi 0.8 kg/cm ² 0.76 bars REFUEL and DEFUEL in 13/16 in. high red letters, pressures in 1/4 in. high red characters and a 1.0 in. red arrow pointing to access panel No.63 and Fig.29 detail F.
8	FR.47 to FR.48, port only	Two 1.0 in. arrows 0.8 in. apart below and pointing to access panel No.63. Below the two arrows HYD RES. Fig.29 detail G on forward end of access panel No.63.
9	FR.47 to FR.48, port only	Fig.29 detail H.
10	FR.48 to FR.49, port only	REHEAT PUMP in 13/16 in. high letters below access panel No.110 with Fig.29 detail D aft of panel and a 1.0 in. arrow pointing to access panel No.110.
11	FR.53 and FR.55 port, FR.55 only starboard	Fig.28 detail F.
12	FR.53 to FR.54 on access panel No.77, port only	PANEL ACCESS CHART INSIDE

KEY TO FIG. 21 EXTERNAL MARKINGS - REAR FUSELAGE - SERVICING continued

ITEM	LOCATION	DETAIL (Actual markings in BOLD capitals)
13	FR.54 to FR.55, port only	Aft of access panel No. 108 TURBINE OIL FILLER in 13/16 in. high letters with a 1.0 in. arrow pointing to panel with Fig.29 detail D on panel
14	Forward of FR.56	PICKETING POINT with 1.0 in. arrow pointing to Fig.29 detail J.
15	FR.56 to FR.57 port and FR.55 to FR.56 starboard.	Fig.29 detail K
16	FR.62 around fuselage	Fig.30 detail A
17	FR.56 to FR.57, port only, on access panel No.76 FR.51 to FR.52, starboard only, on access panel No. 66. FR.55 to FR.56, starboard only on access panel No.72	Fig.28 detail J - note arrow not required
18	Upper engine hatch, forward and aft lower corners	Fig.30 detail C
19	Upper engine hatch, top centre	Fig. 30 detail B
20	FR.32 to FR.36, on spine, port only	DO NOT LEAN HERE in 13/16 in. high letters.
21	FR.53, starboard only	ROTAL VALVE RE-SET LEVER above access panel No.73
22	FR.25 to FR.26 and FR.51 to FR.52, starboard only	Fig.29 detail M
23	FR.55 to FR.56, starboard only	Fig.29 detail L
24	FR.25 to FR.26, starboard only	Fig.29 detail N
25	FR.49 to FR.50, starboard only	PALOUSTE CONNECTION on access panel No.149
26	FR.29, starboard only	ENGINE OIL FILTER in 13/16 in. high letters below Fig.29 detail D aft of access panel No.46 with a 1.0 in. arrow pointing to panel.
27	Not used	
28	FR.46 to FR.47, starboard only	CAUTION FATIGUE METER MOUNTED ON THIS PANEL INSIDE, the words FATIGUE METER in 13/16 in. high letters.

◀ KEY TO FIG.21 EXTERNAL MARKINGS - REAR FUSELAGE - SERVICING continued ▶

ITEM	LOCATION	DETAIL (Actual markings in BOLD capitals)
29	FR.47, starboard only	ENGINE OIL FILTER in 13/16 in. high letters below Fig.29 detail D with a 1.0 in. arrow pointing to access panel No.58
30	FR.48 to FR.49, starboard only	HYD RES above a 1.0 in. arrow pointing down to access panel No.60 with Fig.29 detail G on access panel No.60.
31	FR.56 to FR.57, starboard only	On access panel No.76, lower aft corner Fig.29 detail P.



NOTE... ALL DIMENSIONS IN INCHES

FIG.22 EXTERNAL MARKING - MAINPLANES - UPPER SURFACES - SERVICING

KEY TO FIG. 22 EXTERNAL MARKINGS - MAINPLANES - UPPER SURFACES - SERVICING

ITEM	LOCATION	DETAIL (Actual markings in BOLD capitals)
1	Spar 4 to Spar 5 - inboard	Fig.30 detail G.
2	Aft of Spar 1 and forward of Spar 5	WALK INSIDE YELLOW LINES ONLY in 2.0 in. high letters - Fig.30 detail J.
3	Mid-wing forward of Spar 5	Fig.30 detail H
4	Mid-wing forward of Spar 5	Fig.30 detail K
5	Wing root forward	Fuel vent valve covers to be painted red.
6	Wing root inboard and mid-wing	Fig.30 detail L
7	Flaps and adjacent to inboard edge of aileron cut-out	DTD5580 above a ½ in. wide line, below the line TITANINE or alternative manufacturers initials or name of paint used.

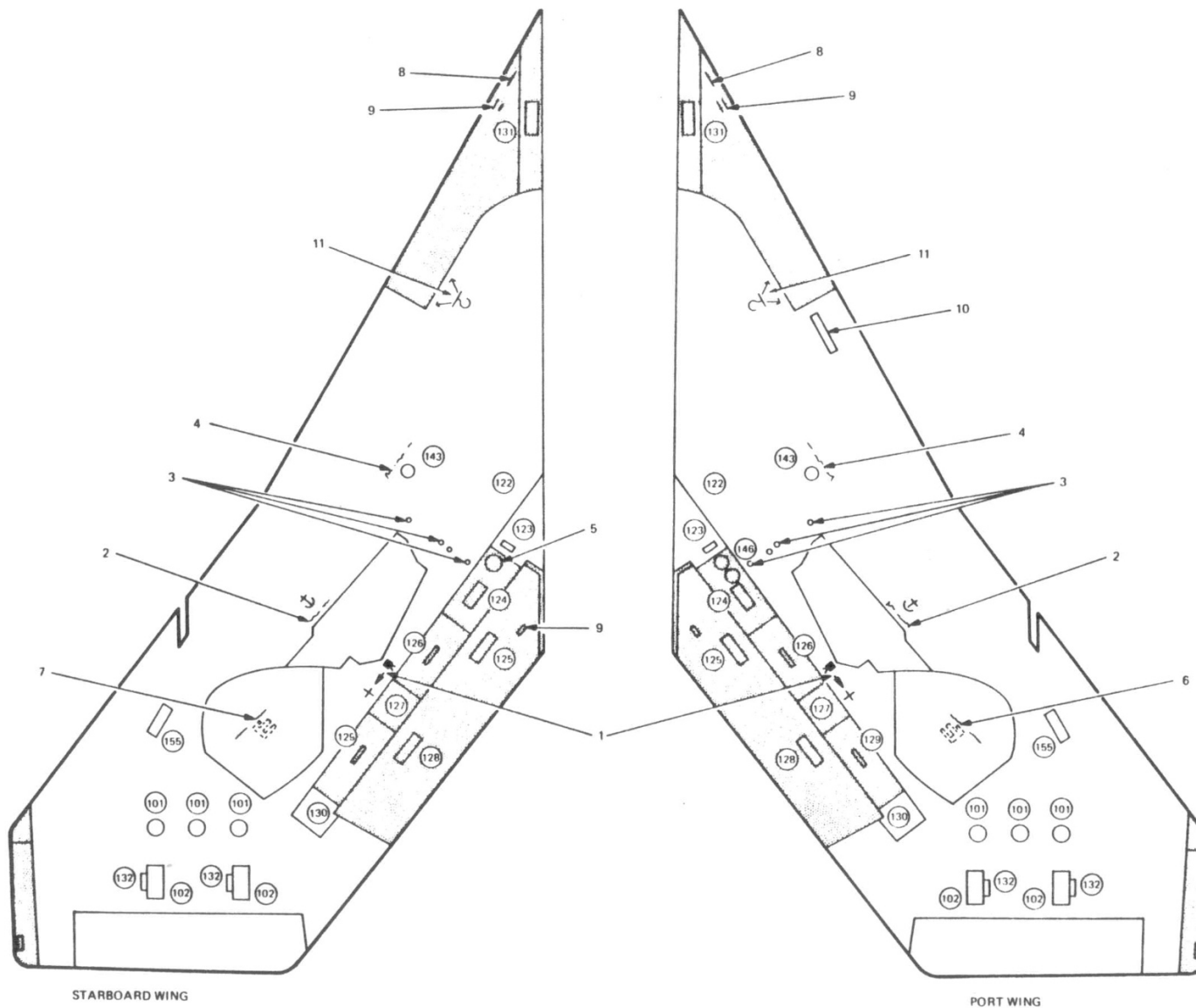


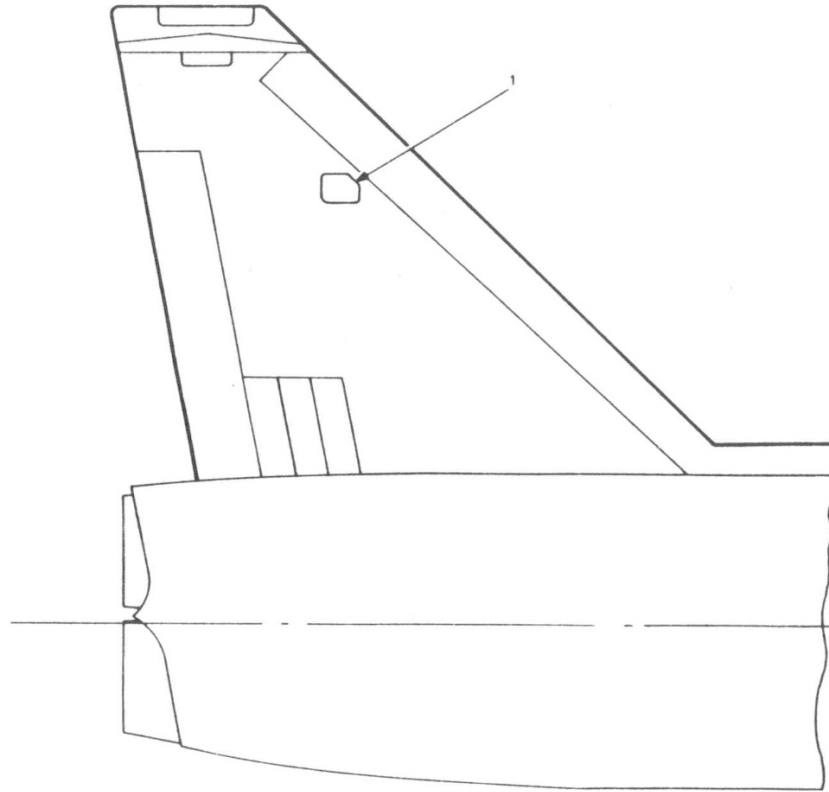
FIG.23 EXTERNAL MARKINGS - MAINPLANES - LOWER SURFACES - SERVICING

◀ SLINGING SYMBOL-ITEM 11-ADDED ▶

KEY TO FIG. 23 EXTERNAL MARKINGS - MAINPLANES - LOWER SURFACES - SERVICING

ITEM	LOCATION	DETAIL (Actual markings in BOLD capitals)
1	Inboard of aft end of undercarriage pivot	Fig.28 detail A with the arrow pointing outboard
2	Main undercarriage wheel wells	PICKETING POINT INSIDE on underside of skin at rib 12A with Fig.31 detail A adjacent to rib 11B
3	Mid-wing forward of Spar 5	Fig. 30 detail H.
4	Mid-wing, forward of access panel No.143	TORQUE LOAD AT 410 LBS/FT.
5	Wing root, forward of flap	Fig.31 detail B
6	Inside surface main undercarriage door, port only	INSIDE WHEEL WELL 200V. AC 24V. DC in 1.0 in. high characters with Fig.28 detail C and a 1.0 in. arrow pointing to supply points.
7	Inside surface main undercarriage door, starboard only	TELEBRIEF CONNECTION in 3/4 in. high letters with a 1.0 in. arrow pointing to connections and Fig.31 detail C
8	Wing root leading edge on lower leading edge tank skin	MISSILE HOIST in 1/4 in. high letters
9	Inboard end of flaps, wing root leading edge and aileron tips	DTD 5555 above a 1/2 in. wide line, below the line ICI or alternative m manufacturers initials or name of apint used.
10	Wing leading edge, RIB 5 to 6, port only	PRIOR TO REMOVAL OF L/E REMOVE FUSE NO. 396 FROM AC FUSE BOX IN SPINE - DISCONNECT AERIAL to be in matt black paint to DTD 5555
11	Spar 1/Rib 4, 5th and 9th leading edge tank screw locations.	Fig.31 detail G.

UK RESTRICTED

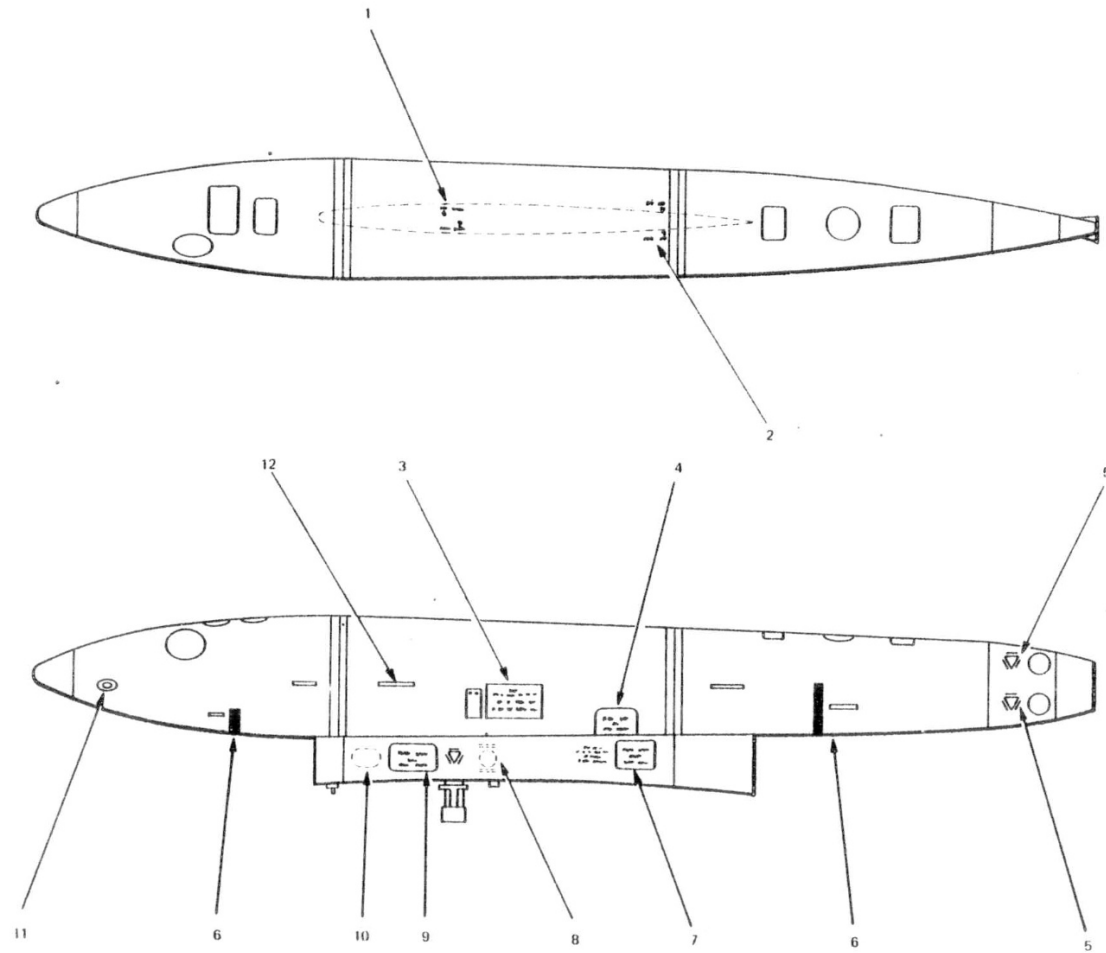


VIEW ON STARBOARD SIDE

FIG. 24 EXTERNAL MARKINGS - FIN - SERVICING

KEY TO FIG.24 EXTERNAL MARKINGS - FIN - SERVICING

ITEM	LOCATION	DETAIL (Actual markings in BOLD capitals)
1	Starboard side of fin.	Fig. 31 detail D

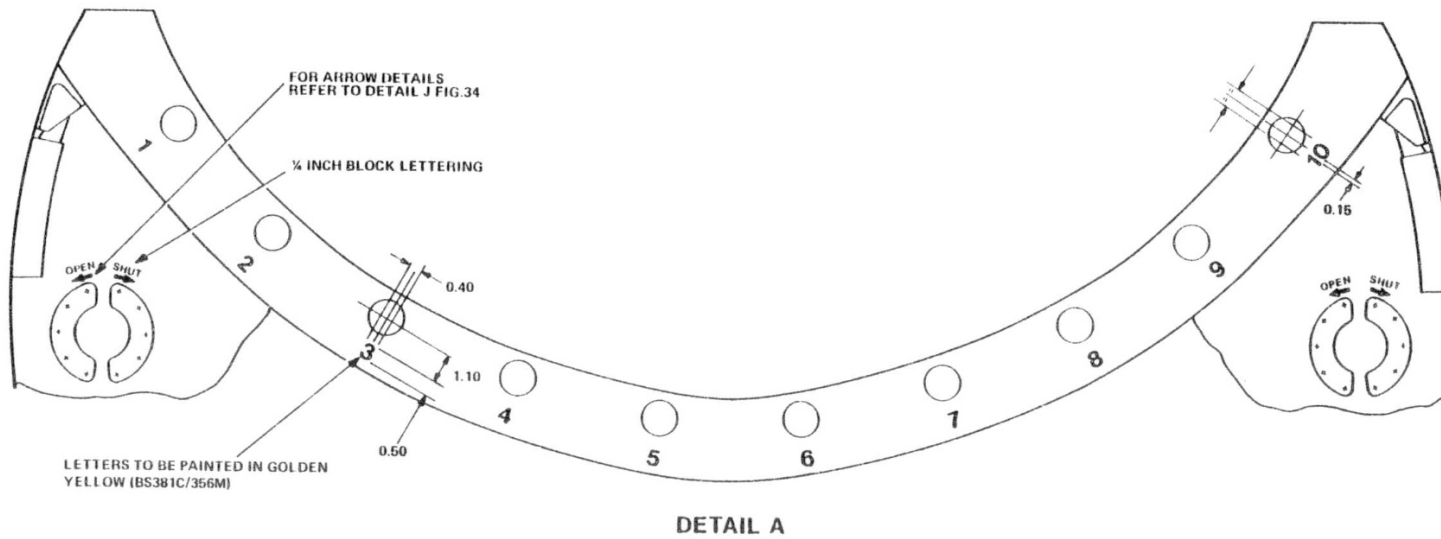
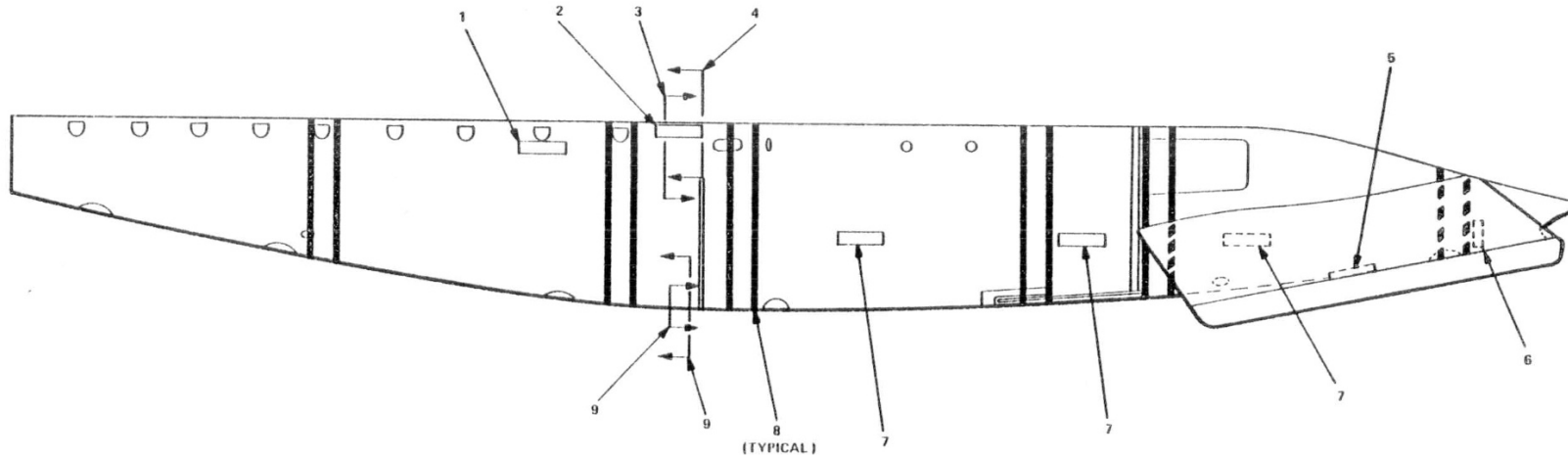


PORT TANK DRAWN
STBD TANK OPPOSITE

FIG. 25. OVERWING FUEL TANKS

KEY TO FIG. 25 EXTERNAL MARKINGS - OVERWING FUEL TANKS

ITEM	LOCATION	DETAIL (Actual markings in BOLD capitals)
1	Stn.90	Fig.32 detail A
2	Stn.136	Fig.32 detail B
3	Stn.100	Fig.32 detail E - opposite hand for starboard tank.
4	Stn.124	Fig.32 detail D
5	Stn.213	Fig.38 detail D
6	Stn.45 and 172	Fig.32 detail C - opposite hand for starboard tank
7	Stn.124	Fig.33 detail A - opposite hand for starboard tank
8	Stn.100	Fig.33 detail D - opposite hand for starboard tank.
9	Stn.85	Fig.38 detail C - opposite hand for starboard tank
10	Stn.73	Fig.33 detail C - opposite hand for starboard tank
11	Stn.16	Fig.33 detail B - opposite hand for starboard tank
12	Outboard each tank section	Assembly part No. to be painted - ½ inch letters in golden yellow (BS381C/356M)

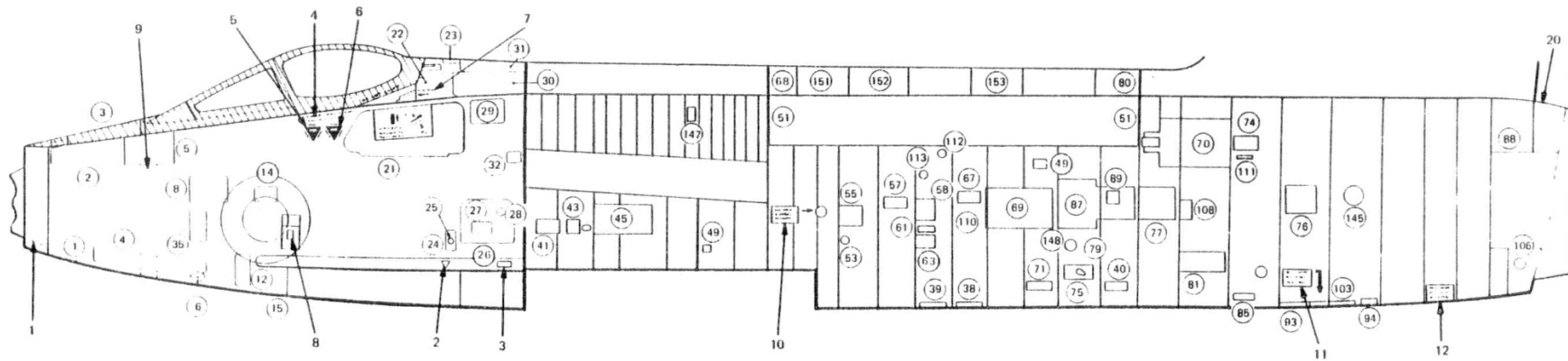


NOTE: ALL DIMENSIONS IN INCHES

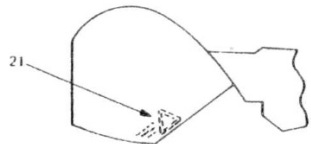
FIG. 26. EXTERNAL MARKINGS VENTRAL PACK

KEY TO FIG. 26 EXTERNAL MARKINGS - VENTRAL PACK

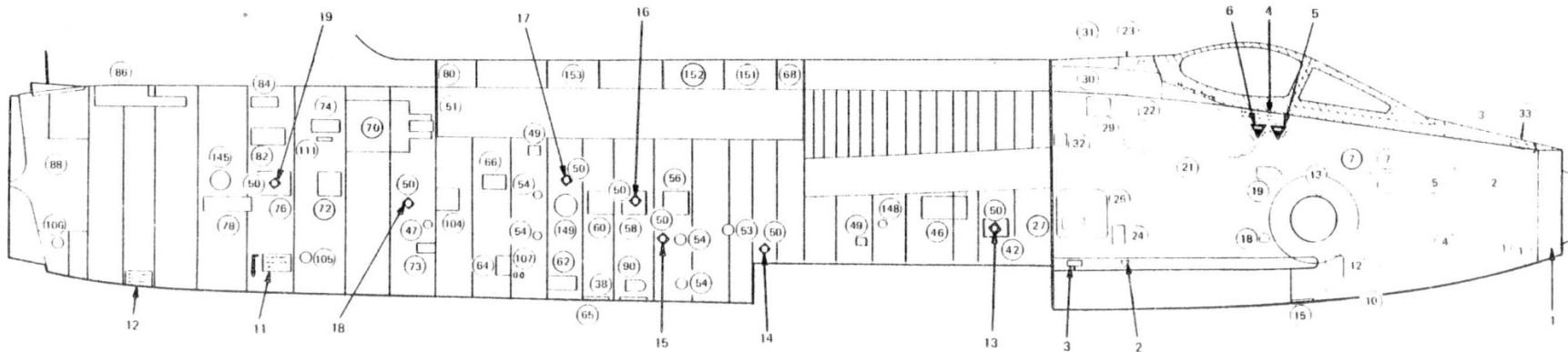
ITEM	LOCATION	DETAIL (Actual markings in BOLD capitals)
1	Stn. 113.4 port and starboard	Fig.34 detail A
2	Stn. 144.5	Fig.34 detail B
3	Stn. 144.15	Fig.34 details C and J
4	Stn. 144.15	Fig.26 detail A
5	Ventral fin	Fig.34 detail D
6	Stn. 294.62	Fig.34 detail E
7	Stns. 175, 213.35 and 250.32	Fig. 34 detail F - at Stn. 213.35 tilt arrow towards floating aft pick-up.
8	Stns. 71.75, 128.75, 152, 209, 233 and 290	Fig.34 detail G
9	Stn. 144.15	Fig.34 details H and J



VIEW ON PORT SIDE



VIEW ON STARBOARD WING
UNDERCARRIAGE DOOR

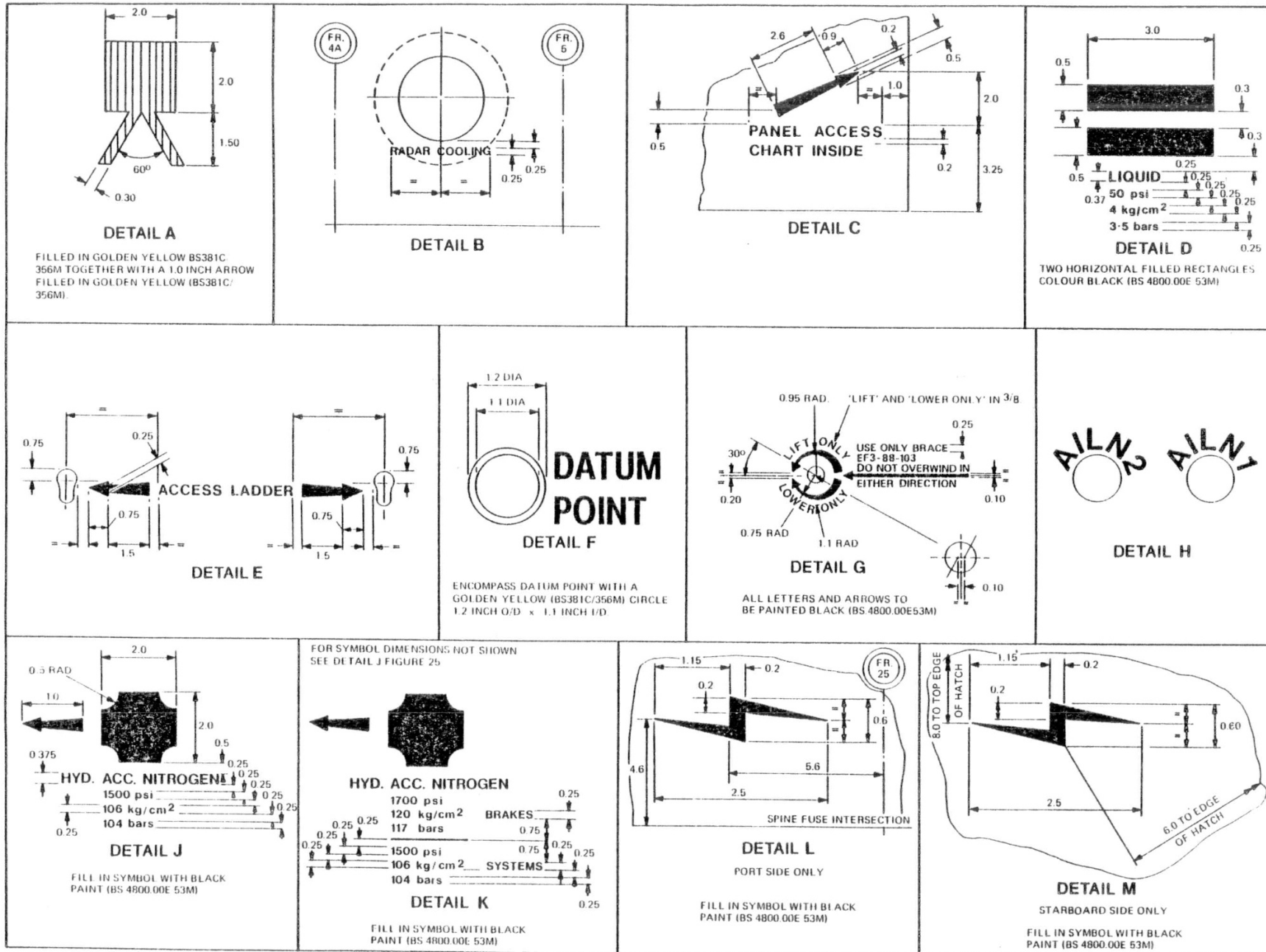


VIEW ON STARBOARD SIDE

FIG. 27. EXTERNAL MARKINGS ~ SAFETY AND SURVIVAL

KEY TO FIG.27 EXTERNAL MARKINGS - SAFETY AND SURVIVAL

ITEM	LOCATION	DETAIL (Actual markings in BOLD capitals)
1	Bullet - lower surface	Fig.35 detail A
2	Below access panels Nos. 24 and 25	Fig.35 detail B
3	Forward of FR.25 below access panels No.26	Fig.38 detail A, with arrow pointing to exhaust
4	Below canopy	CHOP THROUGH CANOPY FOR EMERGENCY RESCUE in 13/16 in. high letters.
5	Below canopy	Fig.35 detail D
6	Below canopy	Fig.35 detail C
7	Below aft end of canopy	Fig.36 detail A
8	On aft lower quadrant of front fuselage roundel, port only	Fig.35 detail F
9	Below access panel No.5 port only	Fig.35 detail E
10	FR.44 to FR.46, port only	Fig.37 detail A
11	FR.56 to FR.57	Fig.37 detail B
12	FR.60 to FR.61, lower surface	Fig.37 detail C
13	FR.26 to FR.27, starboard only, access panel No.42	Fig.37 detail D
14	FR.43 to FR.44, starboard only	Fig.37 detail D
15	FR.46 to FR.47, starboard only	Fig.37 detail D
16	FR.47 to FR.48, starboard only, in access panel No.58	Fig.37 detail D
17	FR.49 to FR.50, starboard only	Fig.37 detail D
18	FR.53 to FR.54, starboard only	Fig.37 detail D
19	FR.56 to FR.57 starboard only, in access panel No.76	Fig.37 detail D
20	FR.63 top centre line of A/C	Fig.37 detail E
21	On undercarriage door, starboard wing only	Fig.38 detail B



ALL DIMENSIONS IN INCHES

FIG. 28. DETAILS OF SERVICING MARKINGS

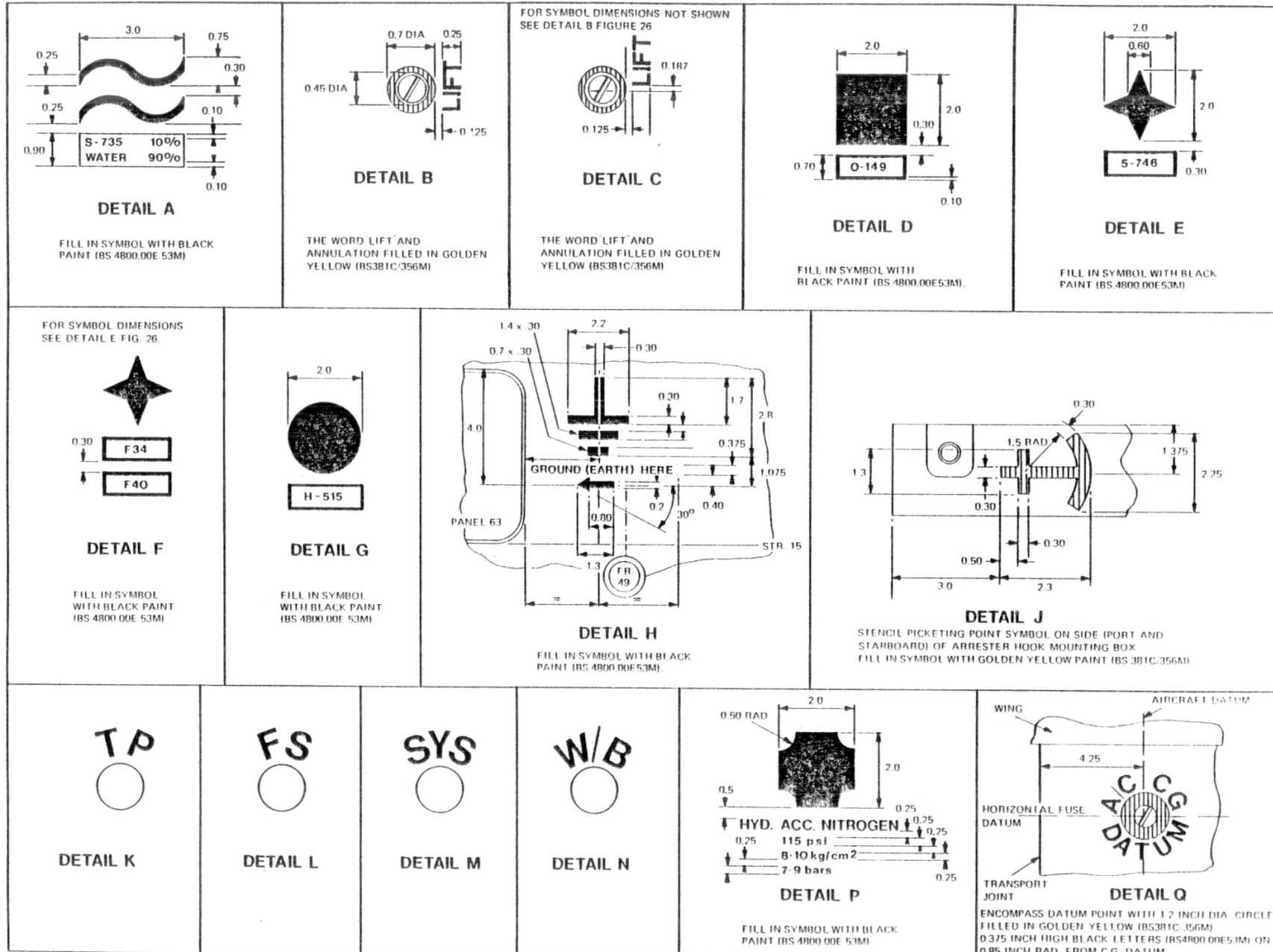


FIG. 29. DETAILS OF SERVICING MARKINGS

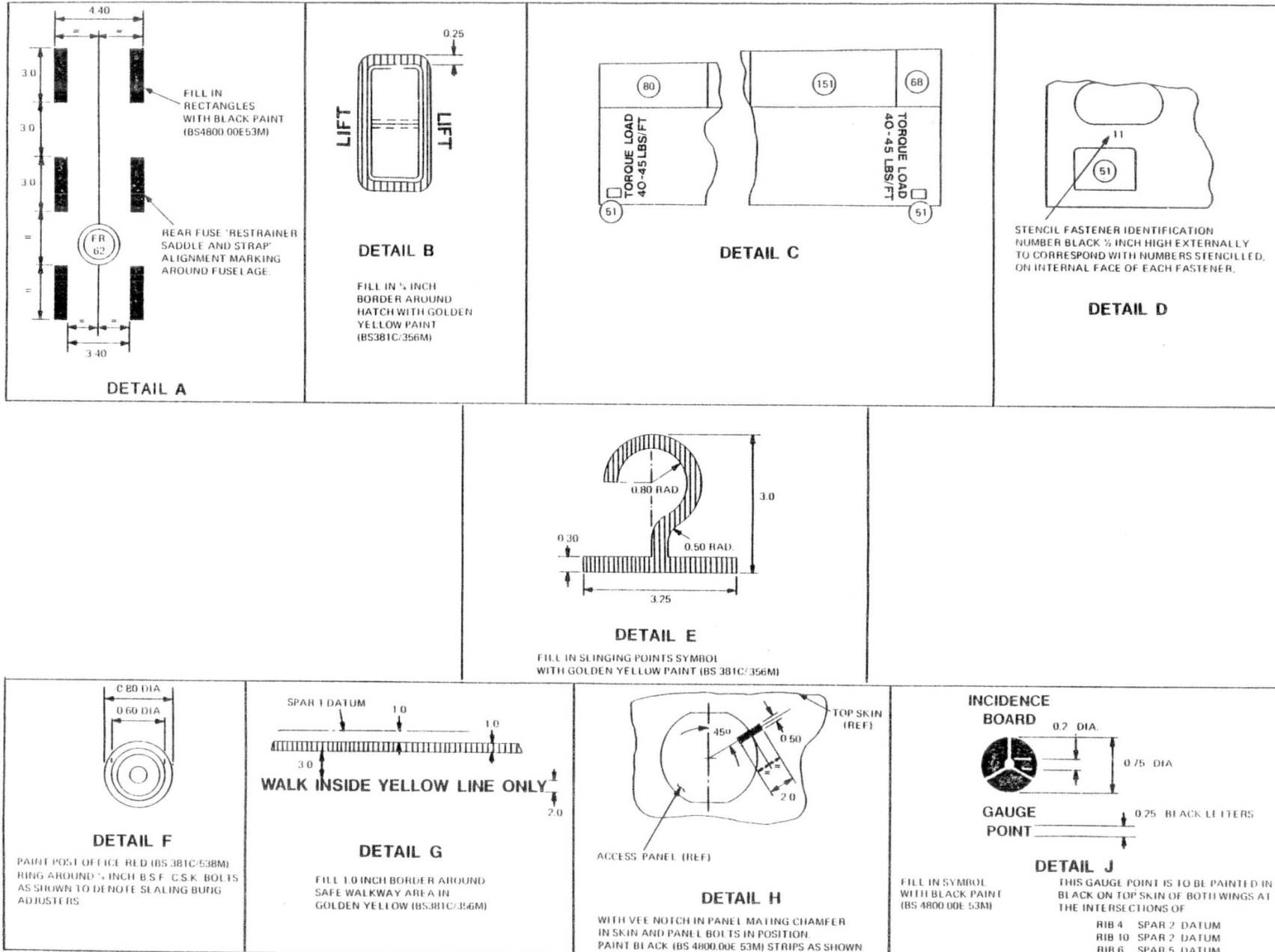
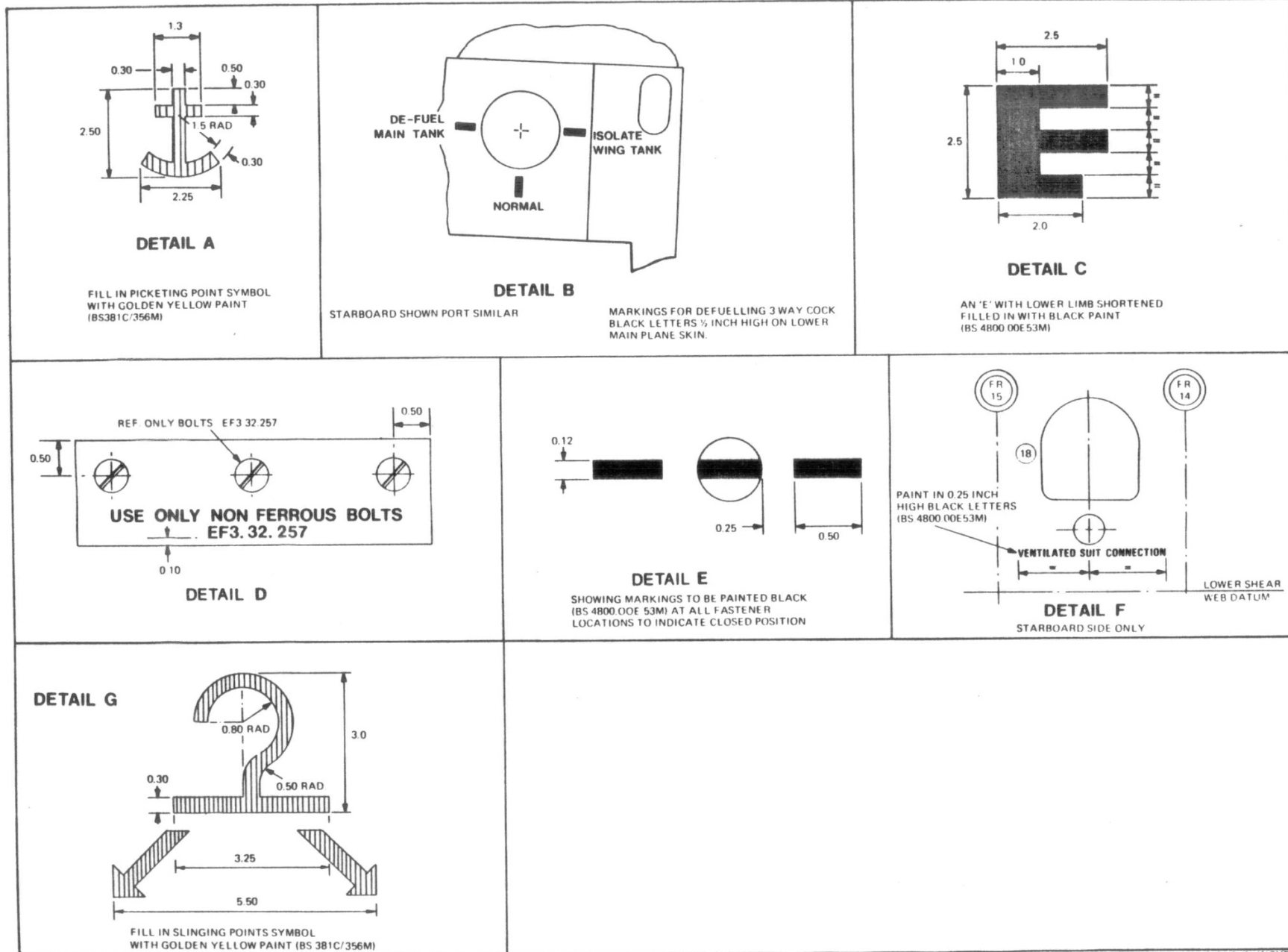


FIG. 30. DETAILS OF SERVICING MARKINGS

NOTE: ALL DIMENSIONS IN INCHES.

UK RESTRICTED

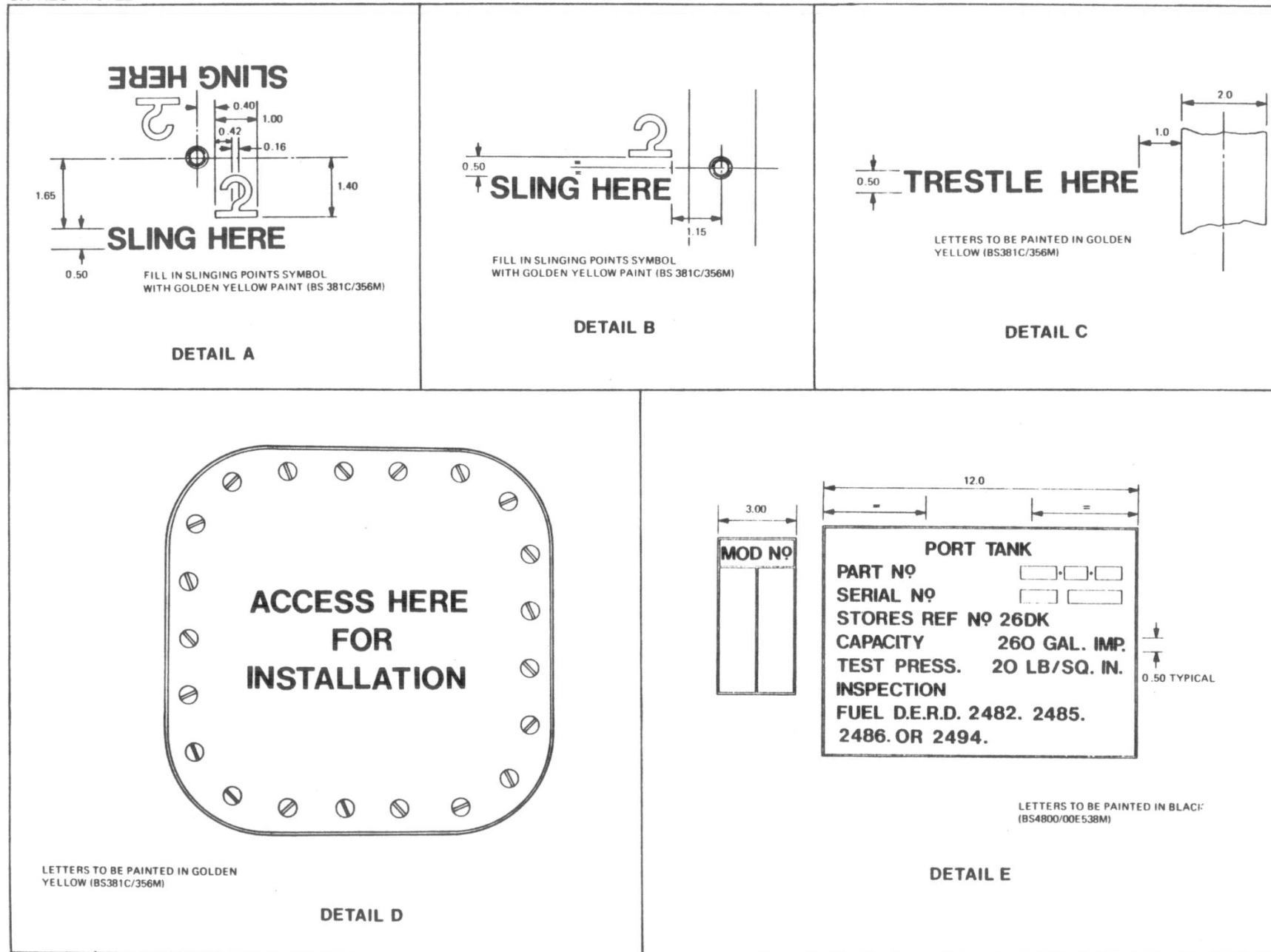


NOTE ALL DIMENSIONS IN INCHES

FIG. 31. DETAILS OF SERVICING MARKINGS

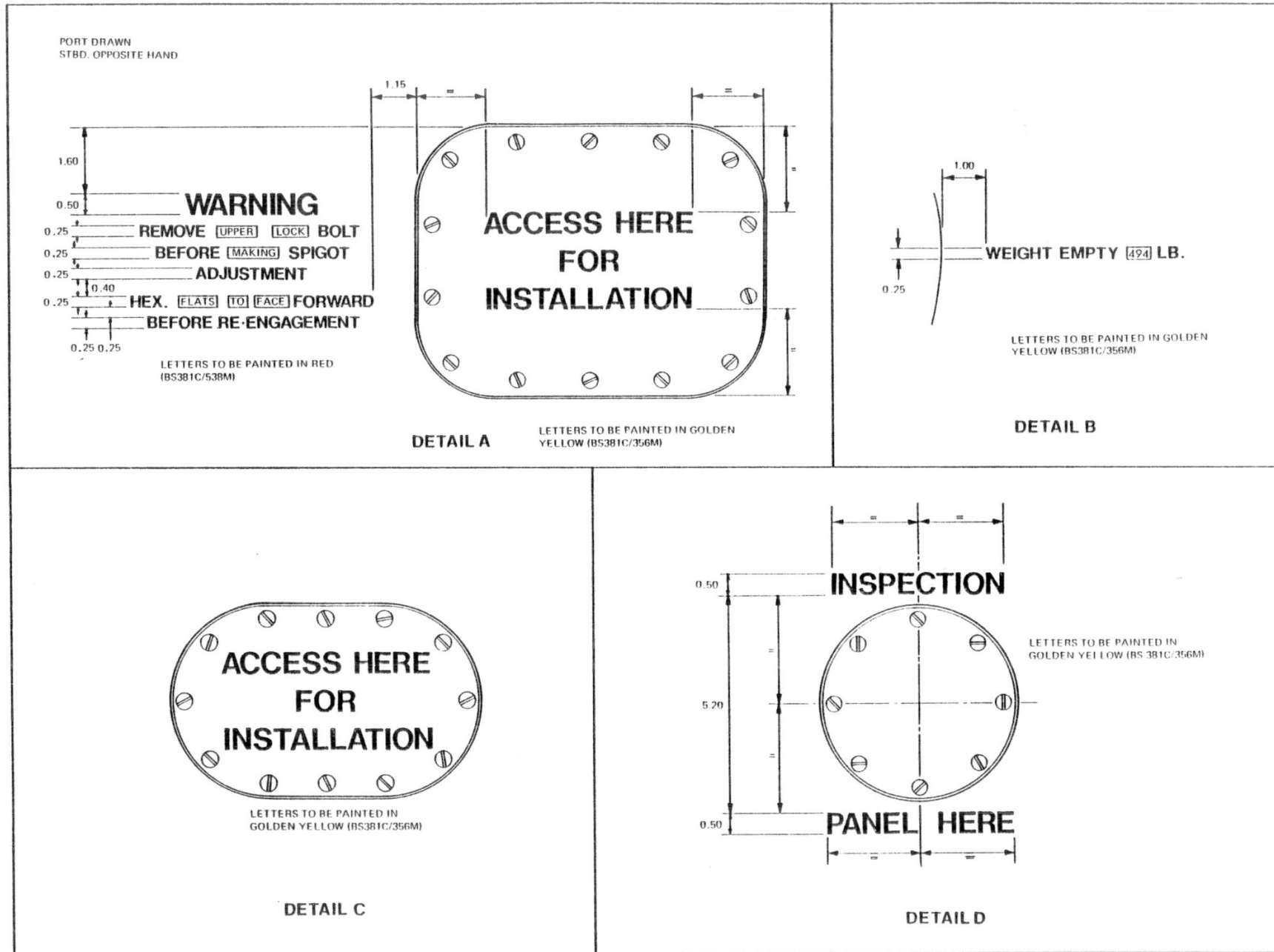
◀ DETAIL G ADDED ▶

UK RESTRICTED



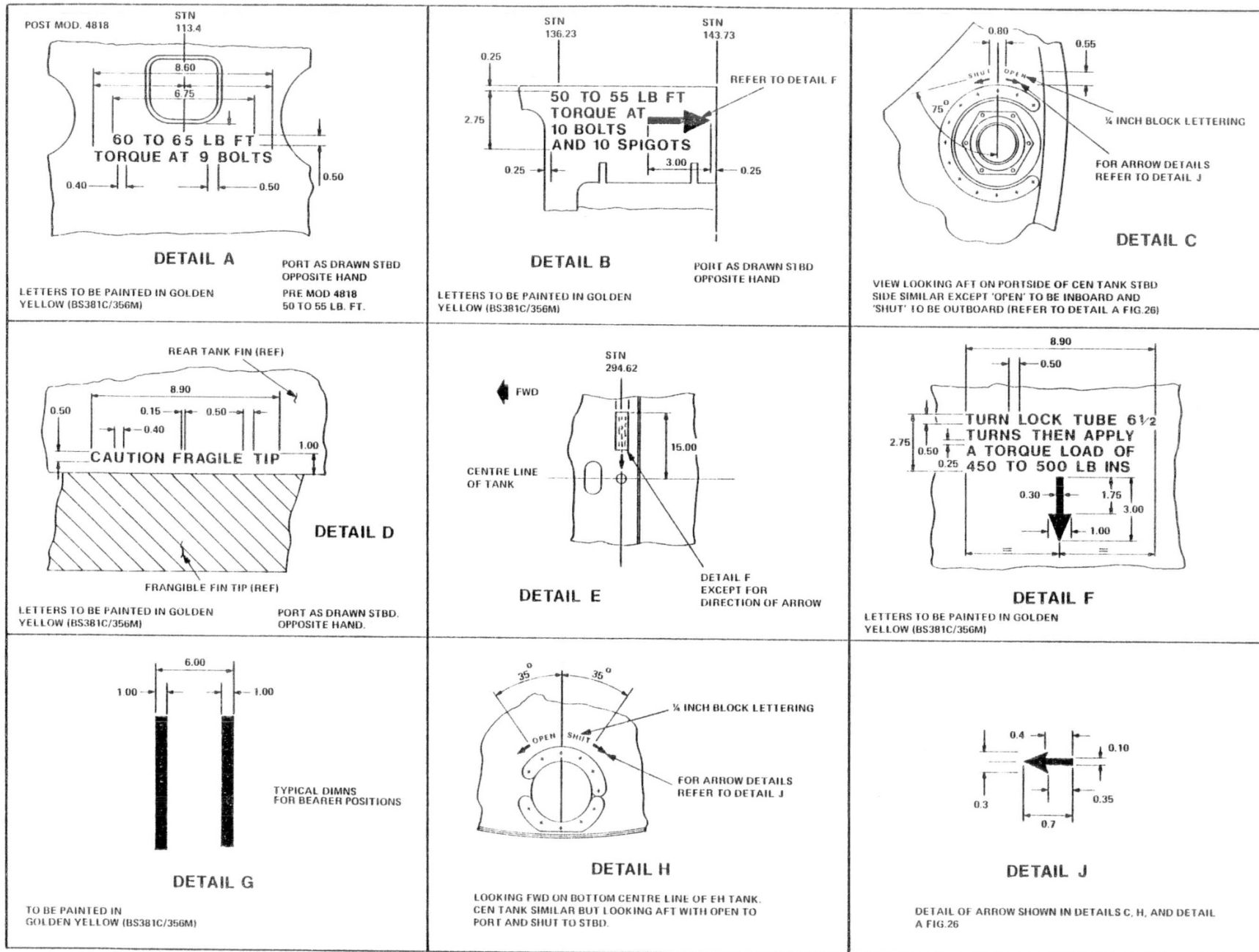
NOTE . . . ALL DIMENSIONS IN INCHES

FIG. 32. DETAILS OF SERVICING MARKINGS



NOTE: ALL DIMENSIONS IN INCHES

FIG. 33. DETAILS OF SERVICING MARKINGS



NOTE . . . ALL DIMENSIONS IN INCHES

FIG.34. DETAILS OF SERVICING MARKINGS

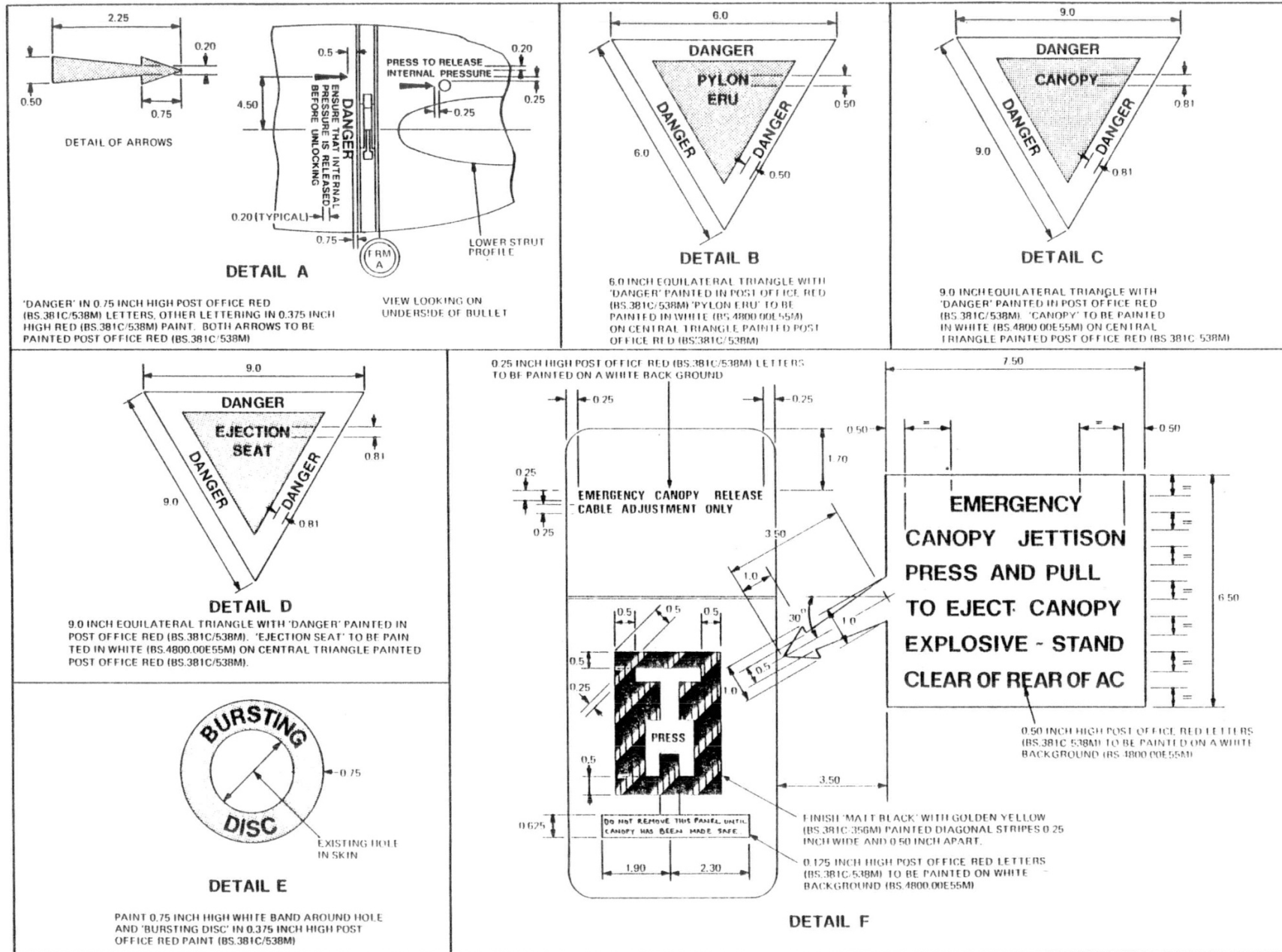


FIG. 35. DETAILS OF SAFETY AND SURVIVAL MARKINGS

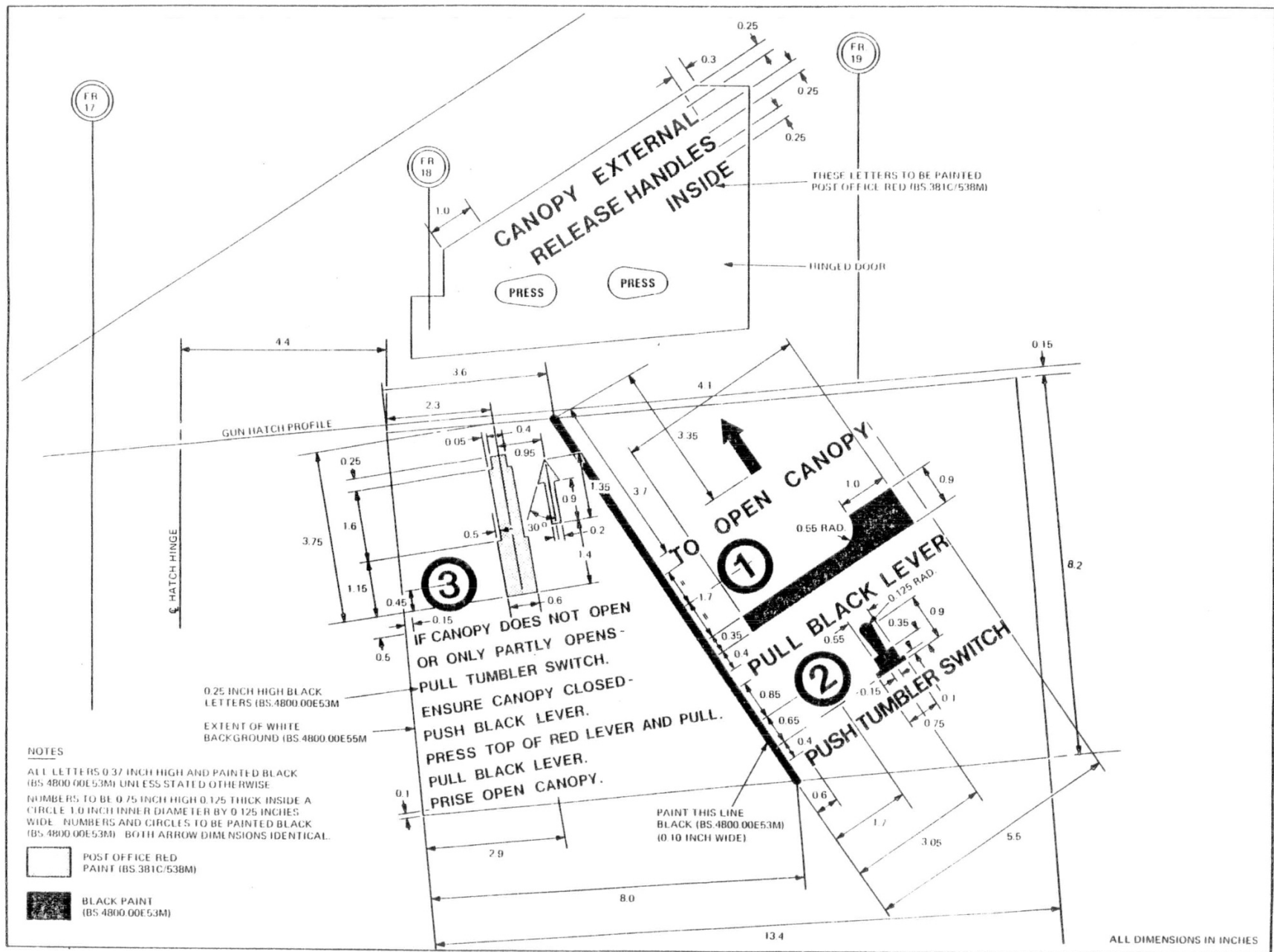


FIG. 36. DETAILS OF SAFETY AND SURVIVAL MARKINGS

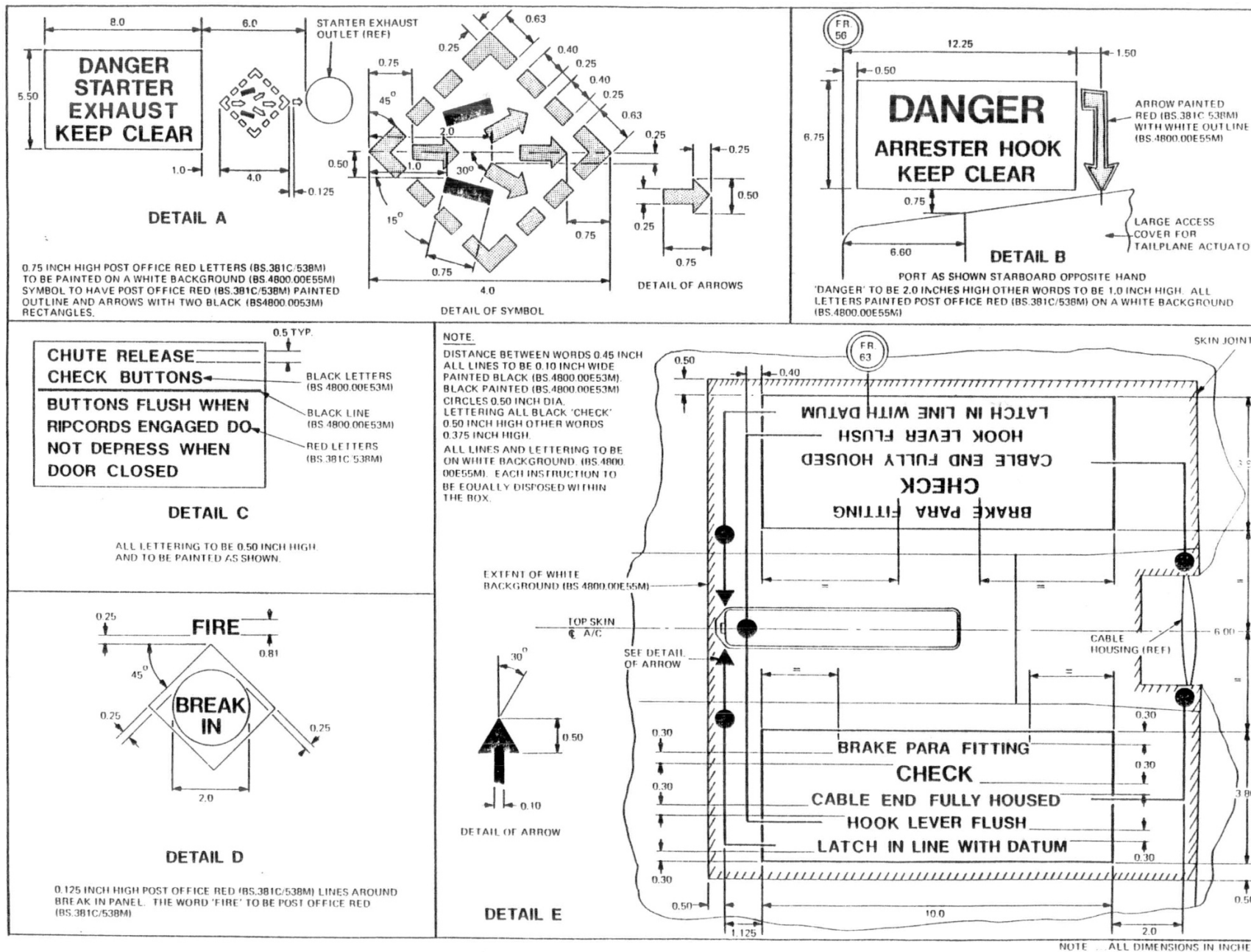


FIG. 37 DETAILS OF SAFETY AND SURVIVAL MARKINGS

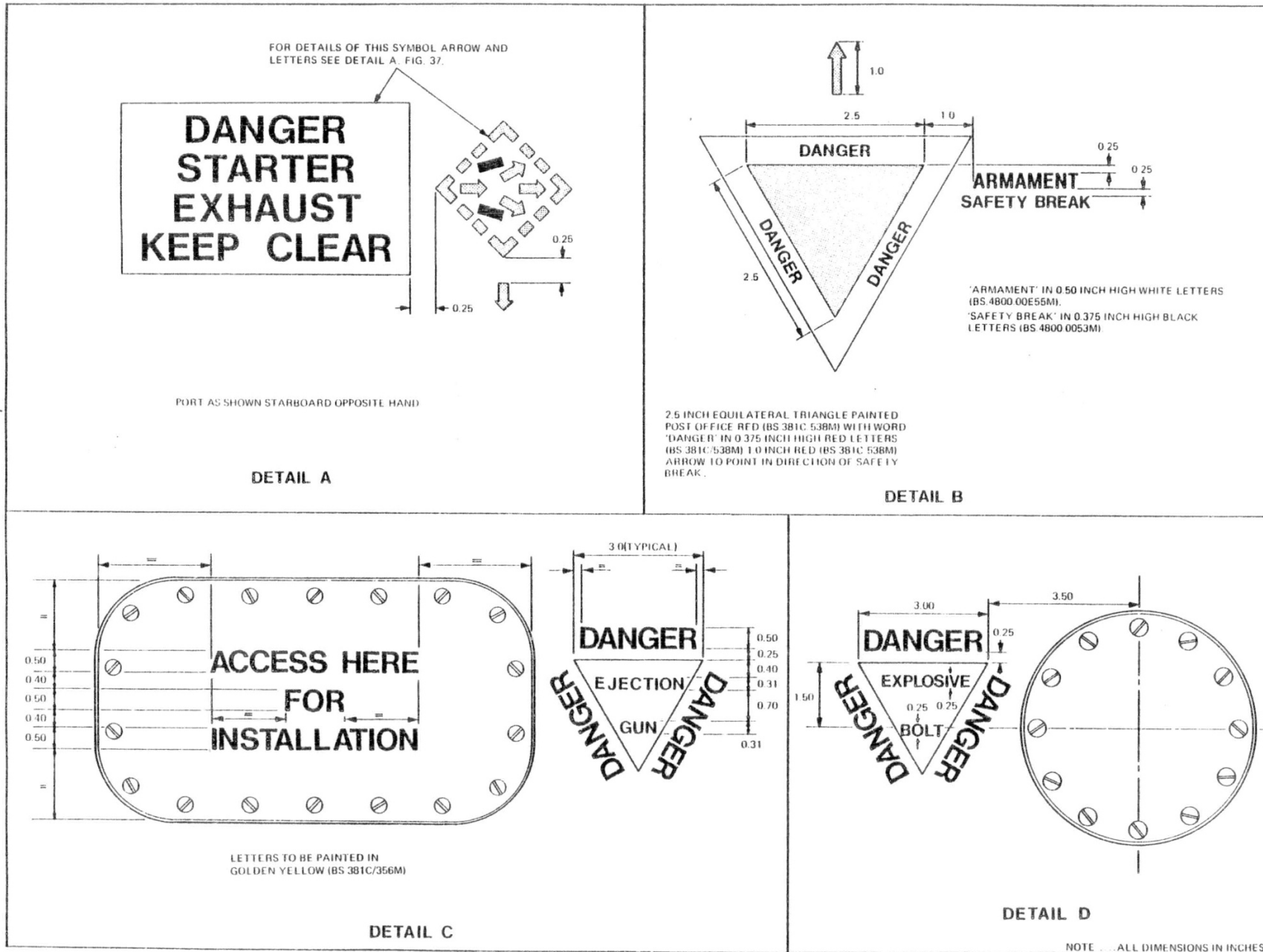


FIG. 38. DETAILS OF SAFETY AND SURVIVAL MARKINGS