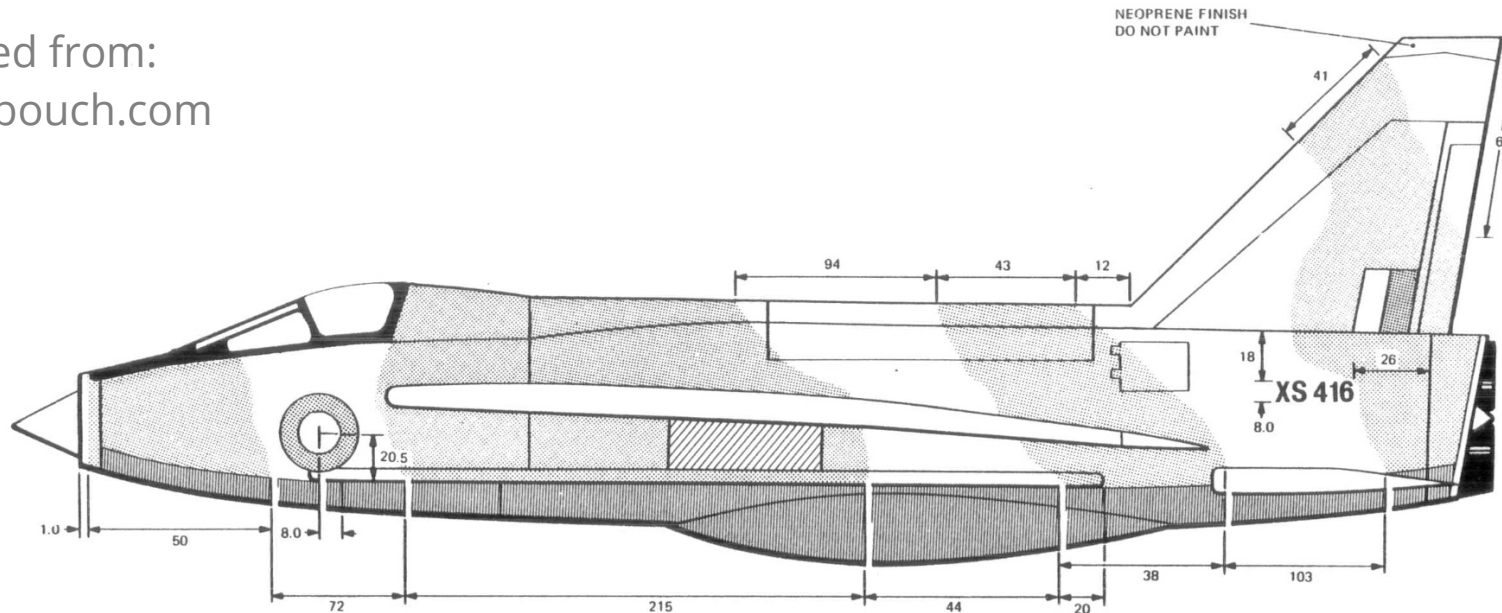









Downloaded from:
www.scottbouch.com

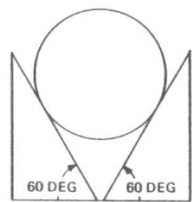
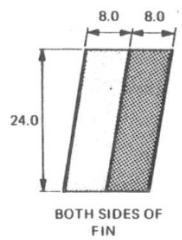


COLOUR CHART FOR FIGURES 15, 16, 17 and 18

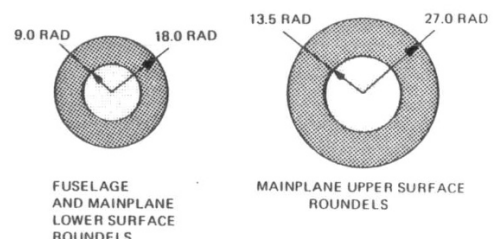
-  IMPORTANT - SKIN PANEL BENEATH MAINPLANE BETWEEN FRAMES 34 AND 44 TO BE LEFT UNPAINTED PORT AND STBD.
-  POST OFFICE RED BS 381C/538 M
-  ROUNDEL BLUE BS 381C/110M
-  DARK SEA GREY BS 381C/638M
-  DARK GREEN BS 381C/641M
-  BRIGHT METAL FINISH
-  SILVER DTD5555A

GOLDEN YELLOW BS 381C/356M
BLACK BS 4800 00E53M
WHITE BS 4800 00E55M

THE LETTER 'M' AFTER THE COLOUR SPEC. NUMBER DENOTES 'MATT'



TYPICAL METHOD OF DETERMINING BOUNDARY MARKINGS ON FUSELAGE



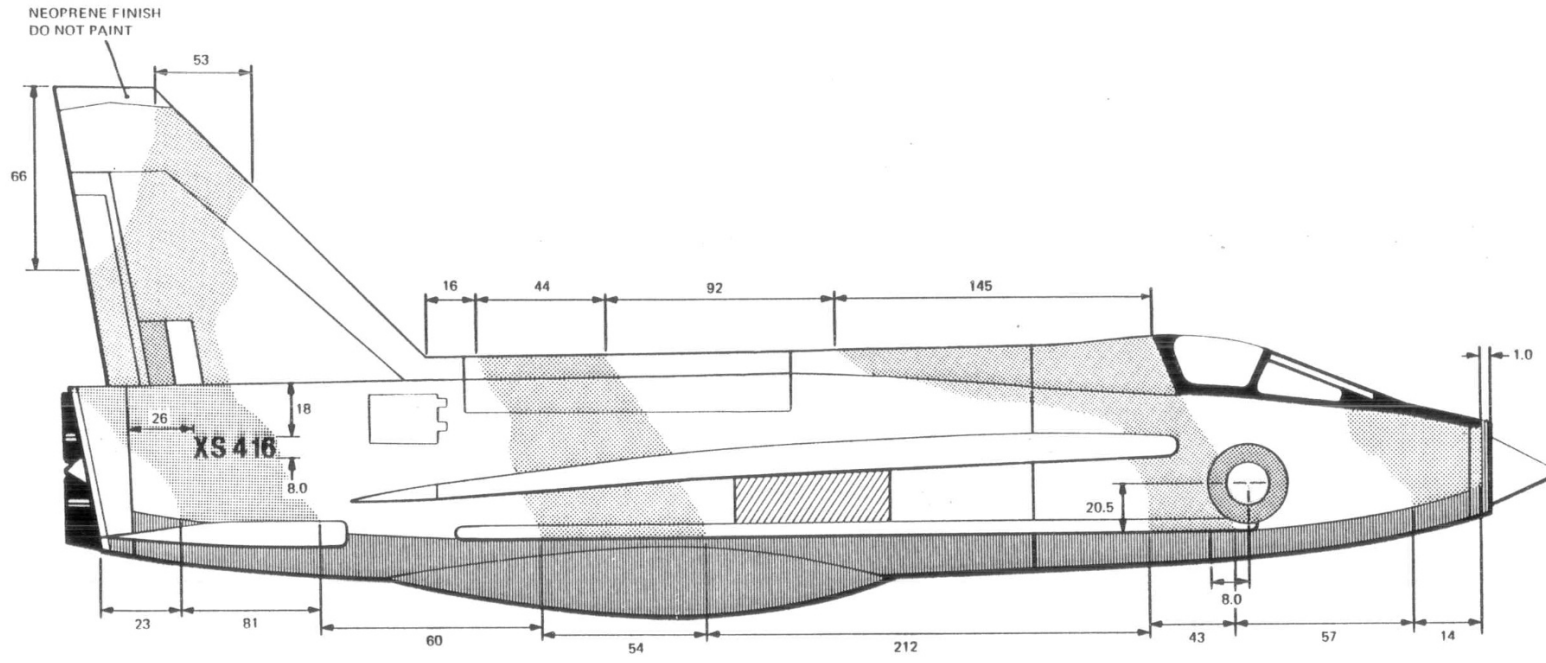
NOTE

1. REGISTRATION NUMBERS ILLUSTRATED ARE TYPICAL ONLY.
2. ALL CANOPY: DIELECTRIC PANELS TO BE MASKED AGAINST SPRAY
3. AIRCRAFT SERIAL NUMBERS ON WINGS TO BE PARALLEL TO SPAR 1.

ALL DIMENSIONS IN INCHES

FIG. 15 CAMOUFLAGE ~ UPPER SURFACE ~ PORT SIDE AND COLOUR CODING

RESTRICTED

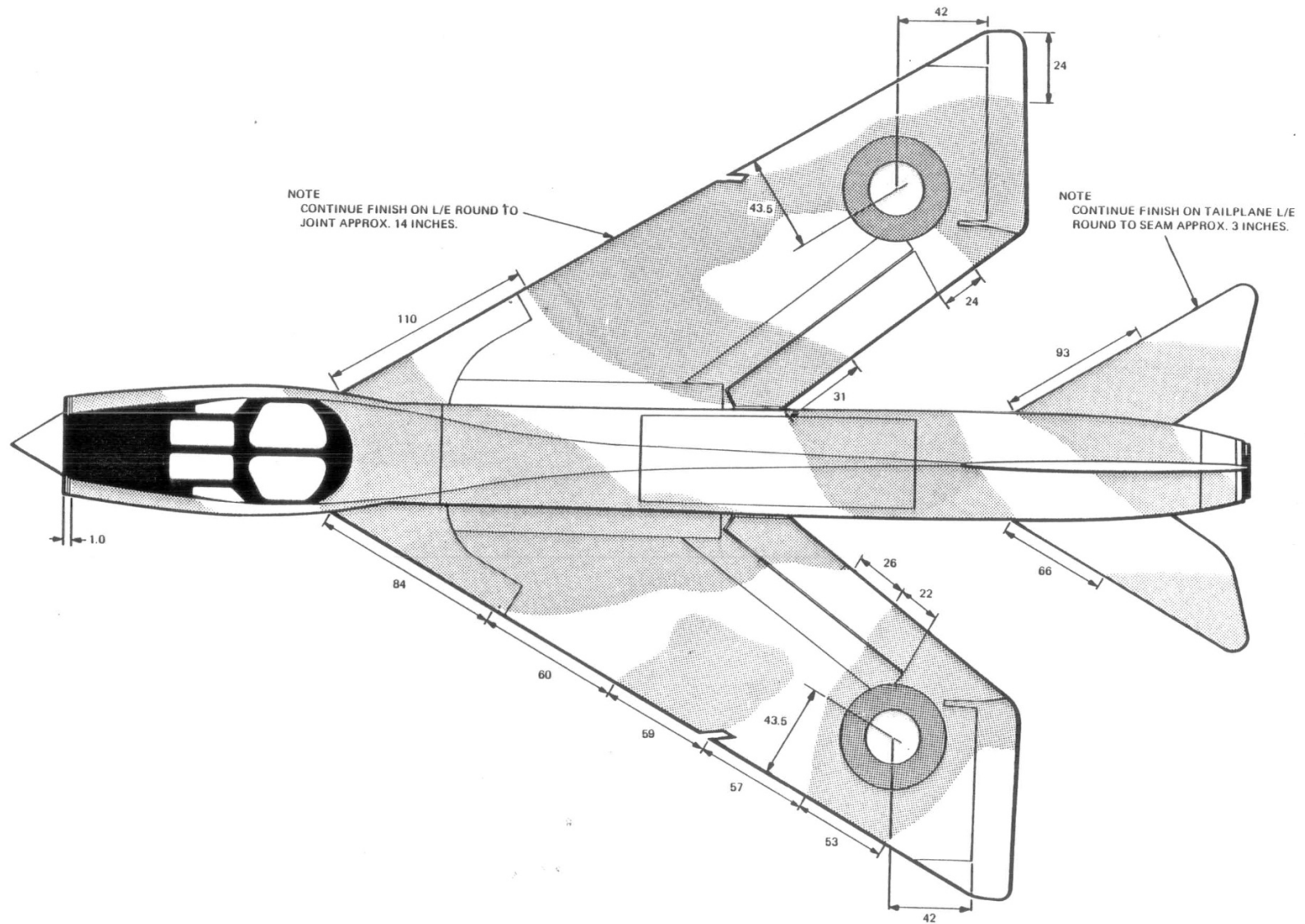


VIEW ON STARBOARD SIDE

ALL DIMENSIONS IN INCHES

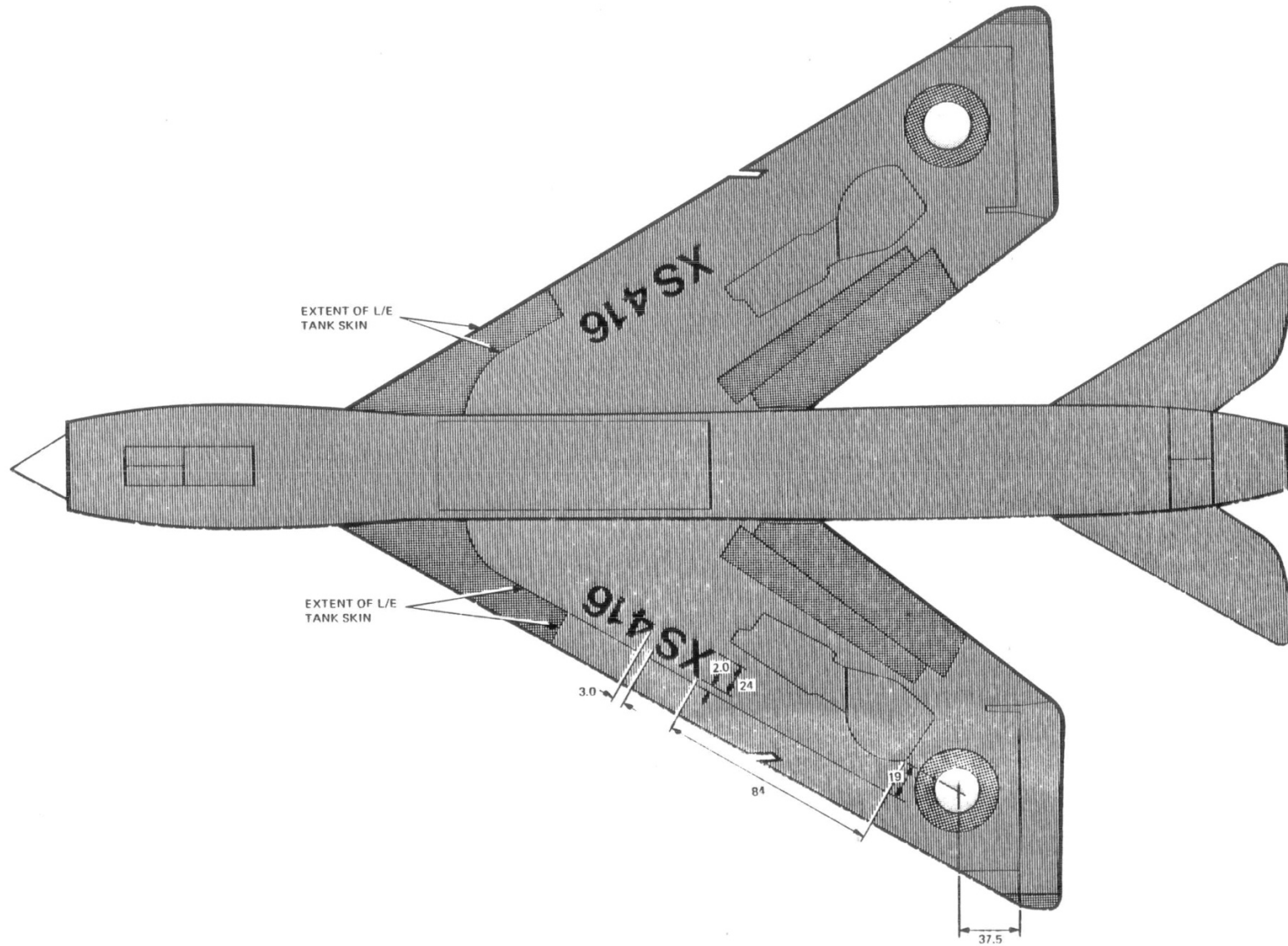
FIG. 16. CAMOUFLAGE~UPPER SURFACE~STARBOARD

RESTRICTED



NOTE...ALL DIMENSIONS IN INCHES

FIG.17. CAMOUFLAGE ~ UPPER SURFACE ~ FUSELAGE, MAINPLANES AND TAILPLANE



NOTE.... ALL DIMENSIONS IN INCHES

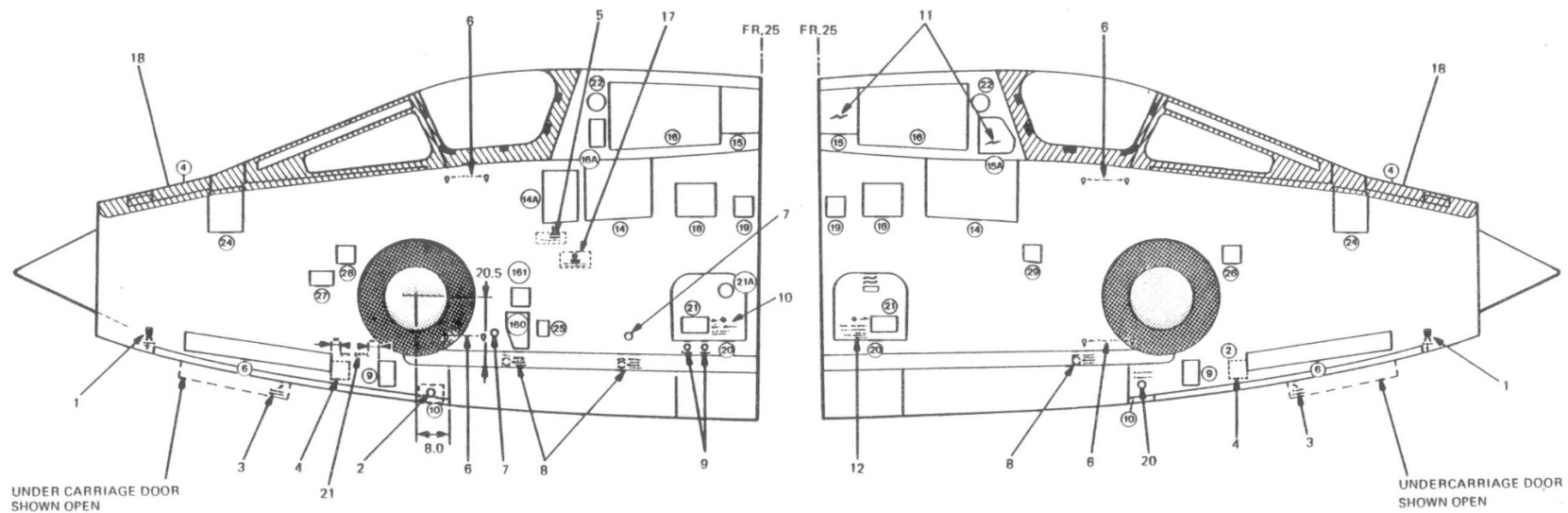
FIG. 18. LOWER SURFACE OF AIRCRAFT.

RESTRICTED

A.P.101B-1005-1A, Sect.2, Chap.4
A.L.102, Jun. 82

◀ **FIG. 19 OVERLEAF** ▶

RESTRICTED

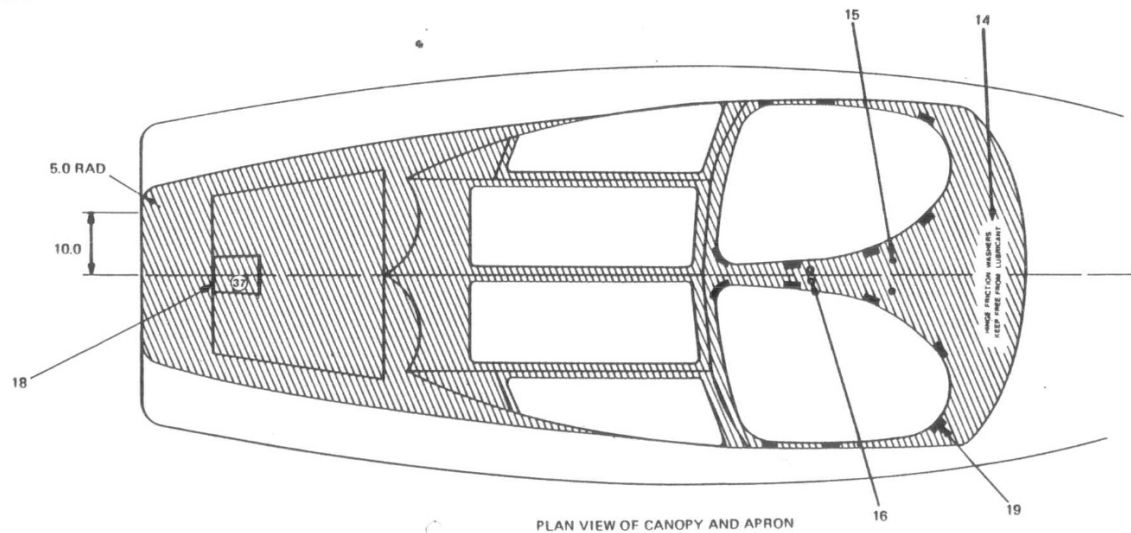


VIEW ON PORT SIDE

VIEW ON STARBOARD SIDE

COLOUR CHART

	ROUNDEL BLUE BS 381C/110M
	POST OFFICE RED BS 381C/538 M
	BLACK BS 4800.00E53M
	GOLDEN YELLOW (BS.381C/356M)



PLAN VIEW OF CANOPY AND APRON

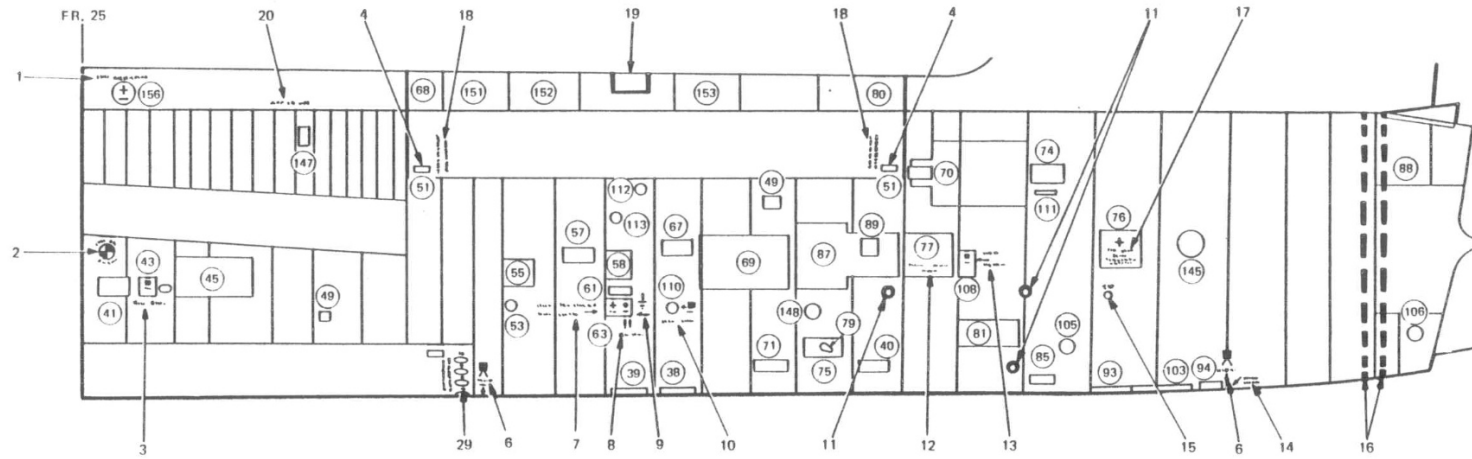
ALL DIMENSIONS IN INCHES

FIG. 19. EXTERNAL MARKINGS - FRONT FUSELAGE ~ SERVICING

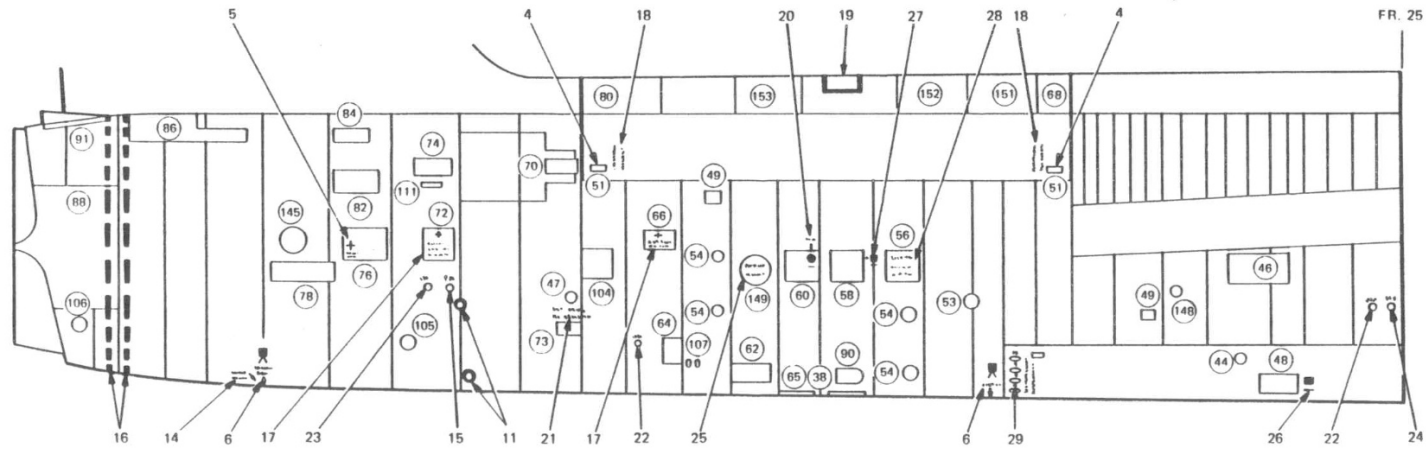
KEY TO FIG.19 EXTERNAL MARKINGS - FRONT FUSELAGE - SERVICING

ITEM	LOCATION	DETAIL (Actual markings in BOLD capitals)
1	Forward of nose undercarriage bay	TRESTLE HERE and Fig.25 detail A
2	Forward of FR.13 above access panel No.10	Fig. 25 detail B
3	Nose U/C door, outside surface, aft end	Fig.25 detail C
4	Nose wheel beam	Panel identification number 2 to be stencilled adjacent to access panels on nose wheel beam.
5	Below panel No.14A, port only	OXYGEN in black letters, USE NO OIL OR GREASE in red letters, below Fig.25 detail D with a 1.0 in. vertical arrow pointing to panel No.14A
6	Aft of nose roundel	Fig.25 detail E
7	Aft of nose roundel, below H.F.D. port only	Fig.25 detail F
8	On longitudinal beam forward end, port and starboard. Aft end, port only.	Fig.25 detail G
9	Forward of FR.25, below access panel No.20, port only.	AILN2 and AILN1 positioned below gauge points, Fig.25 detail H
10	Forward of FR.25, on access panel No.20, port only.	Fig.25 detail J
11	Aft of canopy and forward of FR.25, starboard only.	Fig.25 detail L
12	Forward of FR.25 on access panel No.20, starboard only	Fig.25 detail K
13	Forward of FR.25 on access panel No.20, starboard only	Fig.25 detail M
14	Aft end of canopy	HINGE FRICTION WASHERS KEEP FREE FROM LUBRICANT in 1/8 in. high white letters.
15	Top of canopy - aft sling positions	Fig.26, detail B
16	Top of canopy - forward sling position	Fig.26, detail C
17	Below wing root leading edge	LIQUID OXYGEN VENT in black letters, USE NO OIL OR GREASE in red letters - Fig.26 detail A.
18	Canopy anti-glare apron	Access panel ident No.4 (port and starboard) and No.37 (top centre) to be painted black on a white background
19	Canopy	Edge with 1 in. x 1/4 in. yellow lines, spaced at 12 in. intervals, corners to have 3 in. x 1 in. yellow lines - do not mark transparencies.
20	Forward of FR.13 above access panel No.10	Fig.28 detail H.
21	Forward of roundel - identification of surface finish	DTD 5580 above a 1/2 in. wide line, below the line TITANINE or alternative manufacturers initials or name of paint used.

RESTRICTED



VIEW LOOKING ON PORT SIDE OF REAR FUSELAGE



VIEW LOOKING ON STARBOARD SIDE OF REAR FUSELAGE

FIG. 20 EXTERNAL MARKINGS ~ REAR FUSELAGE ~ SERVICING

RESTRICTED

KEY TO FIG.20 EXTERNAL MARKINGS - REAR FUSELAGE - SERVICING

ITEM	LOCATION	DETAIL (Actual markings in BOLD capitals)
1	FR.25 to FR.29 on spine, port only	STARTER TANK INSIDE in 13/16 in. high letters and Fig.26 detail E
2	Aft of FR.25 on H.F.D., port only	Fig.26 detail F
3	Below leading edge wing root, FR.26 to FR.27, port only	REHEAT PUMP in 13/16 in. high letters below access panel No.43 and Fig.26 detail D on access panel No.43
4	Upper engine hatch, forward and aft ends	Fig.27 detail H
5	FR.56 to FR.57, starboard only	On access panel No.76, lower aft corner Fig.26 detail H
6	FR.44 and FR.59	TRESTLE HERE and Fig.25 detail A
7	FR.46 to FR.48, port only	REFUEL 50 psi MAX 4 kg/cm ² 3.5 bars DEFUEL 11 psi 0.8 kg/cm ² 0.76 bars REFUEL and DEFUEL in 13/16 in. high red letters, pressures in 1/4 in. high red characters and a 1.0 in. red arrow pointing to access panel No.63 and Fig.28 detail E.
8	FR.47 to FR.48, port only	Two 1.0 in. arrows 0.8 in. apart below and pointing to access panel No.63. Below the two arrows HYD RES. Fig.26 detail G on forward end of access panel No.63.
9	FR.47 to FR.48, port only	Fig.26 detail H
10	FR.48 to FR.49, port only	REHEAT PUMP in 13/16 in. high letters below access panel No.110 with Fig.26 detail D aft of panel and a 1.0 in. arrow pointing to access panel No. 110.
11	FR.53 and FR.55 port, FR.55 only starboard	Fig.25 detail F.
12	FR.53 to FR.54 on access panel No.77, port only	PANEL ACCESS CHART INSIDE
13	FR.54 to FR.55, port only	Aft of access panel No. 108 TURBINE OIL FILLER in 13/16 in. high letters with a 1.0 in. arrow pointing to panel with Fig.26 detail D on panel.
14	FR.59 - bottom	PICKETING POINT with 1.0 in. arrow pointing to Fig.26 detail L.
15	FR.56 to FR.57 port and FR.55 to FR.56 starboard	Fig.27 detail A
16	FR.62 around fuselage	Fig.26 detail K

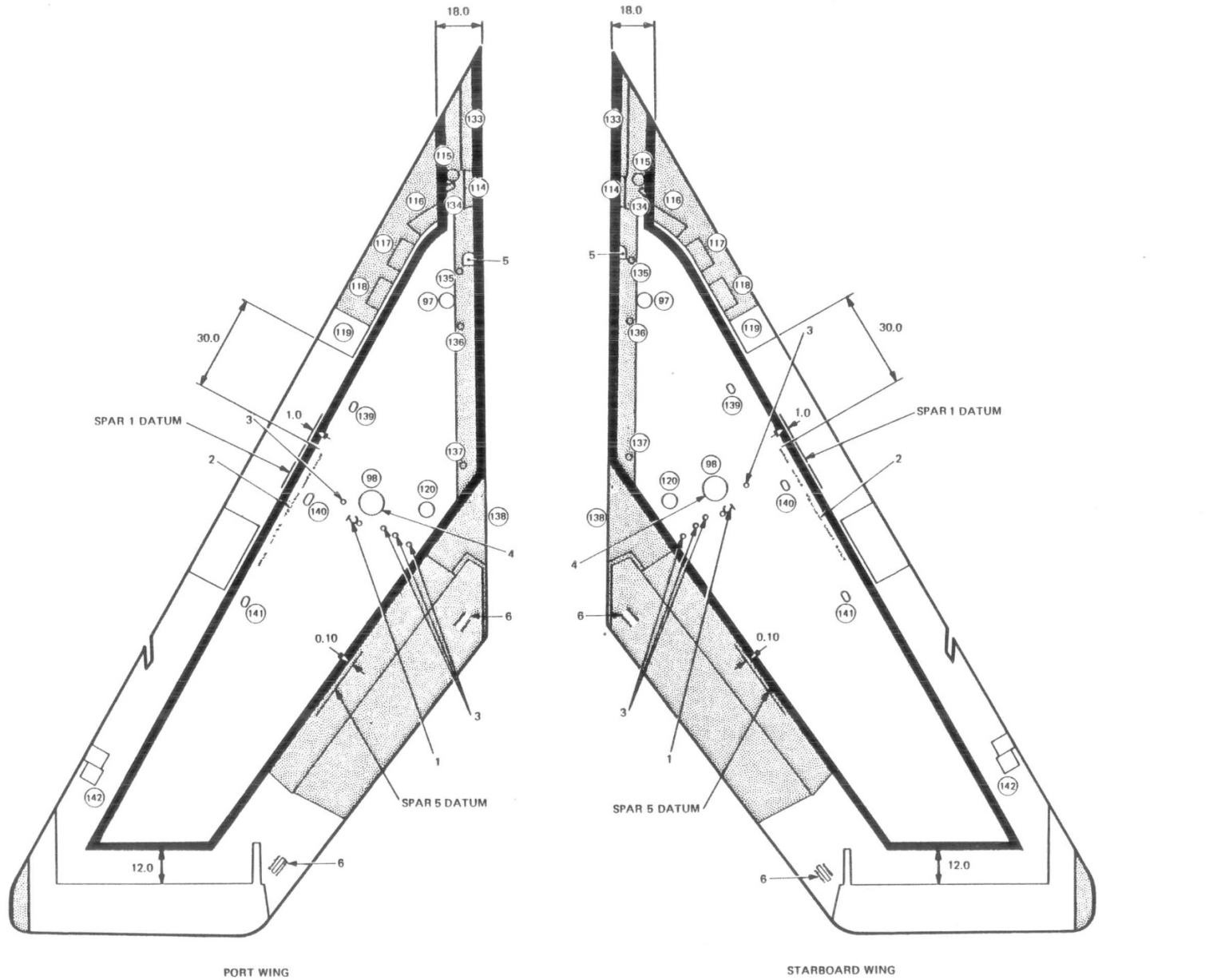
Continued ...

KEY TO FIG.20 EXTERNAL MARKINGS - REAR FUSELAGE - SERVICING continued

ITEM	LOCATION	DETAIL (Actual markings in BOLD capitals)
17	FR.56 to FR.57, port only, on access panel No.76 FR.51 to FR.52, starboard only, on access panel No.66 FR.55 to FR.56, starboard only on access panel No.72	Fig.25 detail J - note arrow not required
18	Upper engine hatch, forward and aft lower corners	Fig.27 detail G
19	Upper engine hatch, top centre	Fig.27 detail F
20	FR.48 to FR.49, starboard only	HYD RES above a 1.0 in. arrow pointing down to access panel No.60 with Fig.26 detail G on access panel No.60.
21	FR.53 starboard only	ROTAL VALVE RE-SET LEVER above access panel No.73.
22	FR.25 to FR.26 and FR.51 to FR.52 starboard only	Fig.27 detail C
23	FR.55 to FR.56, starboard only	Fig.27 detail B
24	FR.25 to FR.26, starboard only	Fig.27 detail D
25	FR.49 to FR.50, starboard only	PALOUSTE CONNECTION on access panel No.149.
26	Lower engine hatch, starboard only	ENGINE OIL FILTER in 13/16 in. high letters below Fig.28 detail A forward of access panel No.48.
27	FR.47, starboard only	ENGINE OIL FILTER in 13/16 in. high letters below Fig.27 detail E with a 1.0 in. arrow pointing to access panel No.58.
28	FR.46 to FR.47, starboard only	CAUTION FATIGUE METER MOUNTED ON THIS PANEL INSIDE, the words FATIGUE METER to be in 13/16 in. high letters and other wording in 1/2 in. high letters.
29	Lower engine hatch, aft end.	Fig.28 detail D.

◀ FIG. 21 OVERLEAF ▶

RESTRICTED



ALL DIMENSIONS IN INCHES

FIG. 21. EXTERNAL MARKING~MAINPLANES~UPPER SURFACES~SERVICING

RESTRICTED

KEY TO FIG.21 EXTERNAL MARKINGS - MAINPLANES - UPPER SURFACES - SERVICING

ITEM	LOCATION	DETAIL (Actual markings in BOLD capitals)
1	Spar 4 to Spar 5 - inboard	Fig. 27 detail J
2	Aft of Spar 1 and forward of Spar 5	WALK INSIDE YELLOW LINES ONLY in 2.0 in. high letters - Fig.27 detail K
3	Mid-wing forward of Spar 5	Fig. 27 detail L
4	Mid-wing forward of Spar 5	Fig. 27 detail M
5	Wing root forward	Fuel vent valve cover to be painted red.
6	Flaps and adjacent to inboard edge of aileron cut-out	DTD 5580 above a ½ in. wide line, below the line TITANINE or alternative manufacturers initials or name of paint used.

UK RESTRICTED

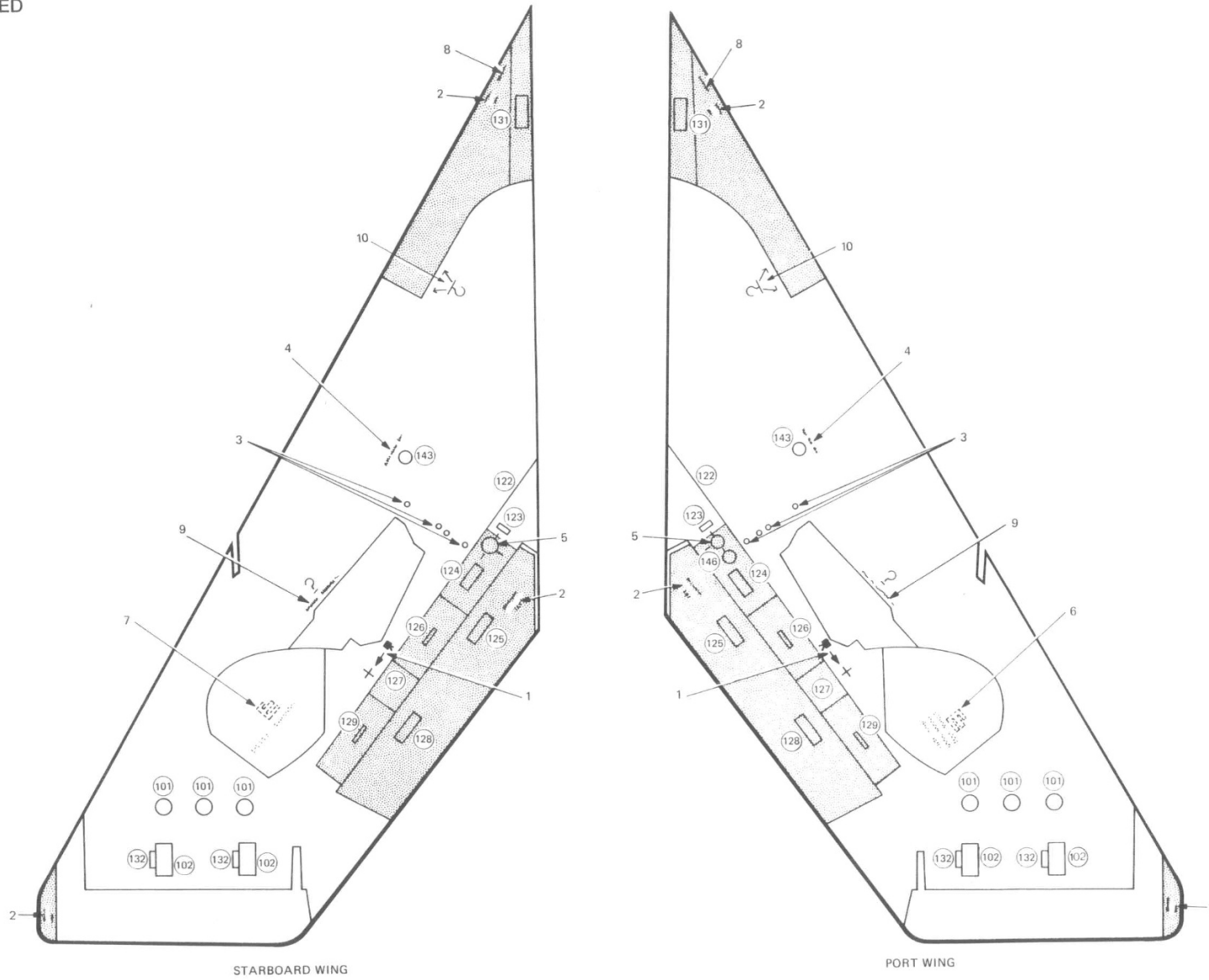
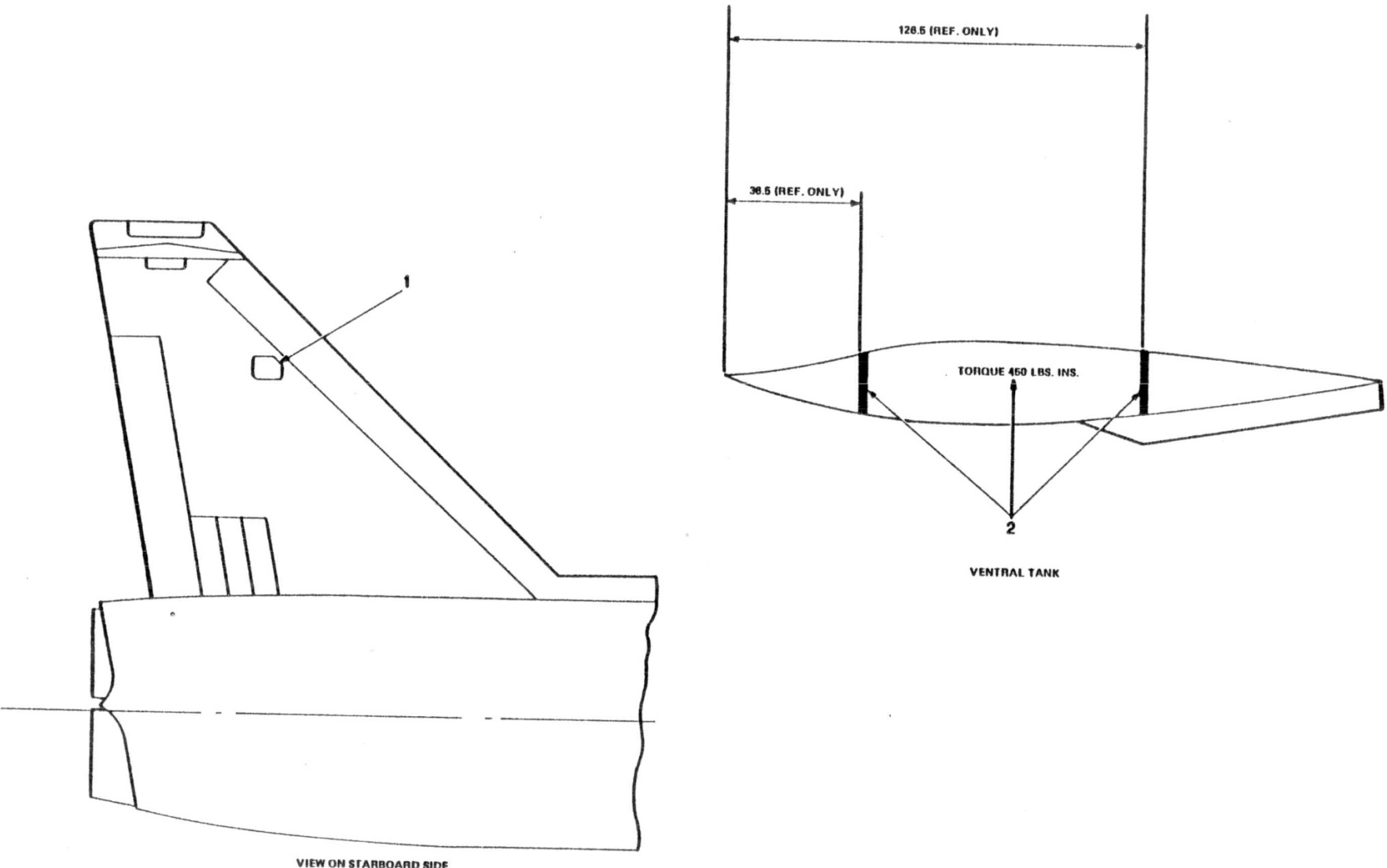


FIG. 22. EXTERNAL MARKINGS ~ MAINPLANES ~ LOWER SURFACES ~ SERVICING

◀ SLINGING SYMBOL-ITEM 10-ADDED ▶

KEY TO FIG. 22 EXTERNAL MARKINGS - MAINPLANES - LOWER SURFACES - SERVICING

ITEM	LOCATION	DETAIL (Actual markings in BOLD capitals)
1	Inboard of aft end of undercarriage pivot	Fig. 25 detail A with arrow pointing outboard
2	Inboard end of flaps, wing root leading edge and aileron tips.	DTD 5555 above a ½ in. wide line below the line ICI or alternative manufacturers initials or name of paint used.
3	Mid-wing forward of Spar 5.	Fig. 27 detail L
4	Mid-wing forward of access panel No. 143	TORQUE LOAD TO 410 LBF FT.
5	Wing root, forward of flap	Fig. 28 detail B
6	Inside surface main undercarriage door, port only	INSIDE WHEEL WELL 200V. AC 24V. DC In 1.0 in. high characters with fig.28 detail C and a 1.0 in. arrow pointing to supply points
7	Inside surface main undercarriage door, starboard only.	TELEBRIEF CONNECTION in ¼ in. high letters with a 1.0 in. arrow pointing to connections and Fig.28 detail C.
8	Wing root leading edge on lower leading edge tank skin.	MISSILE HOIST in ¼ in. high letters.
9	Main undercarriage wheel wells	PICKETING POINT INSIDE on underside of skin at rib 12A.
10	Spar 1/Rib 4, 5th and 9th leading edge tank screw locations.	Fig.28 detail J.



NOTE . . . ALL DIMENSIONS IN INCHES

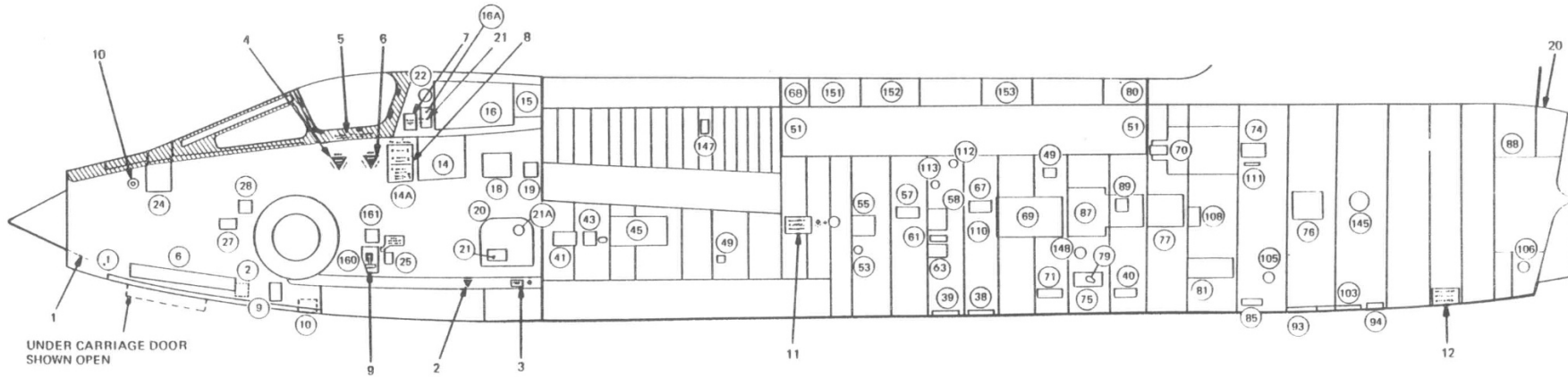
FIG. 23 EXTERNAL MARKINGS ~ FIN AND VENTRAL TANK - SERVICING

<DIMENSIONS AMENDED>

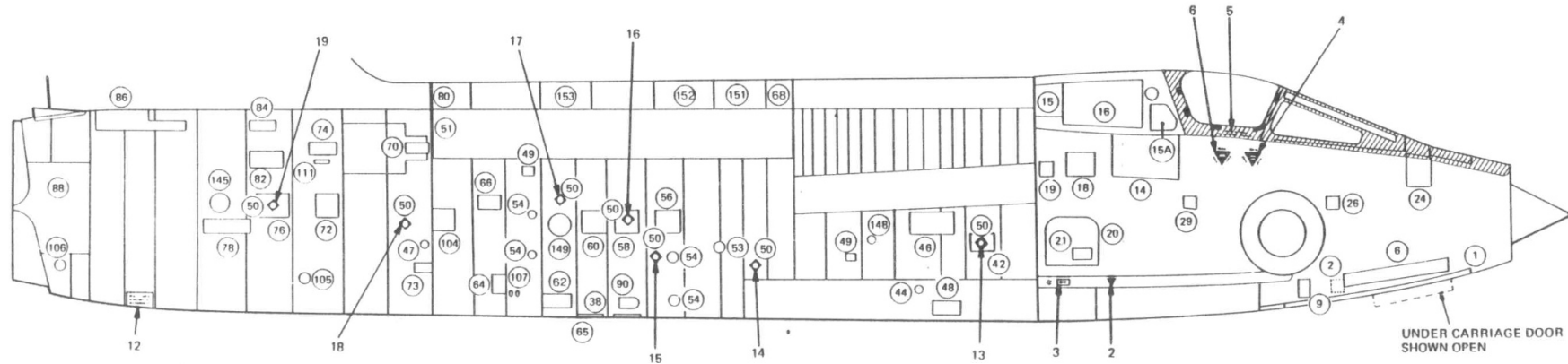
◀ KEY TO FIG.23 EXTERNAL MARKINGS - FIN AND VENTRAL TANK - SERVICING ▶

ITEM	LOCATION	DETAIL (Actual markings in BOLD capitals)
1	Starboard side of fin.	Fig. 28 detail F
2	Ventral tank	TORQUE 450 LBS. INS. and 1.0 in. wide black lines around tank.

▶



VIEW ON PORT SIDE



VIEW ON STARBOARD SIDE

FIG. 24. EXTERNAL MARKINGS ~ SAFETY AND SURVIVAL

KEY TO FIG. 24 EXTERNAL MARKINGS - SAFETY AND SURVIVAL.

ITEM	LOCATION	DETAIL (Actual markings in BOLD capitals)
1	Bullet - lower surface	Fig. 29 detail A
2	On longitudinal beam,below and forward of access panel No. 20	Fig.29 detail B
3	Forward of FR.25 below access panels No. 20	Fig. 32 detail B
4	Below canopy	Fig. 30 detail B
5	On canopy - lower aft end	Fig. 30 detail A
6	Below aft end of canopy	Fig. 30 detail C
7	Aft of canopy - port only	Fig. 31 detail B
8	Below aft end of canopy on access panel No. 14A, port only	<p>Fig. 30 detail D. TO OPEN CANOPY, operation markings 1 and 2, diagrammatic drawings and arrows - paint black.</p> <p>Operation markings 3, diagrammatic drawings and arrow- paint red.</p> <p>Operation markings 1 and 2 - 3/8in. high letters.</p> <p>Operation markings 3 - 1/4 in. high letters.</p> <p>Figures 1, 2 and 3 to be 3/4 in. high, 1/8 in. thick. Figures 1 and 2 black on white background and figure 3 red on white background.</p> <p>Hatched area of skin and panel to be painted white</p> <p>Horizontal dividing line between operations 2 and 3 to be 1/8 in. thick, painted black.</p>
9	Aft of roundel - port only	Fig.31 detail A
10	Below forward end of canopy anti-glare - port only	Fig. 29 detail C
11	FR.42 to FR.44, port only	Fig. 29 detail D

continued

KEY TO FIG. 24 EXTERNAL MARKINGS - SAFETY AND SURVIVAL continued

ITEM	LOCATION	DETAIL (Actual markings in BOLD capitals)
12	Lower surface, FR.60 to FR.61	Fig. 29. detail E
13	FR.26 to FR.27, access panel No.42, starboard only	Fig. 29 detail F
14	FR.43 to FR.44, starboard only	Fig. 29 detail F
15	FR.46 to FR.47, starboard only	Fig. 29 detail F
16	FR.47 to FR.48, starboard only, on access panel No.58	Fig. 29 detail F
17	FR.49 to FR.50, starboard only	Fig. 29 detail F
18	FR.53 to FR.54, starboard only	Fig. 29 detail F
19	FR.56 to FR.57, starboard only, on access panel No.76	Fig. 29 detail F
20	FR.63 top centre line of A/C.	Fig. 32 detail A
21	FR.18, on aft side of hinged door assembly.	DO NOT CHOP in 13/16 in. high red letters, below add 2.0 in. red arrow pointing to edge of hinged door just above EXTERNAL.

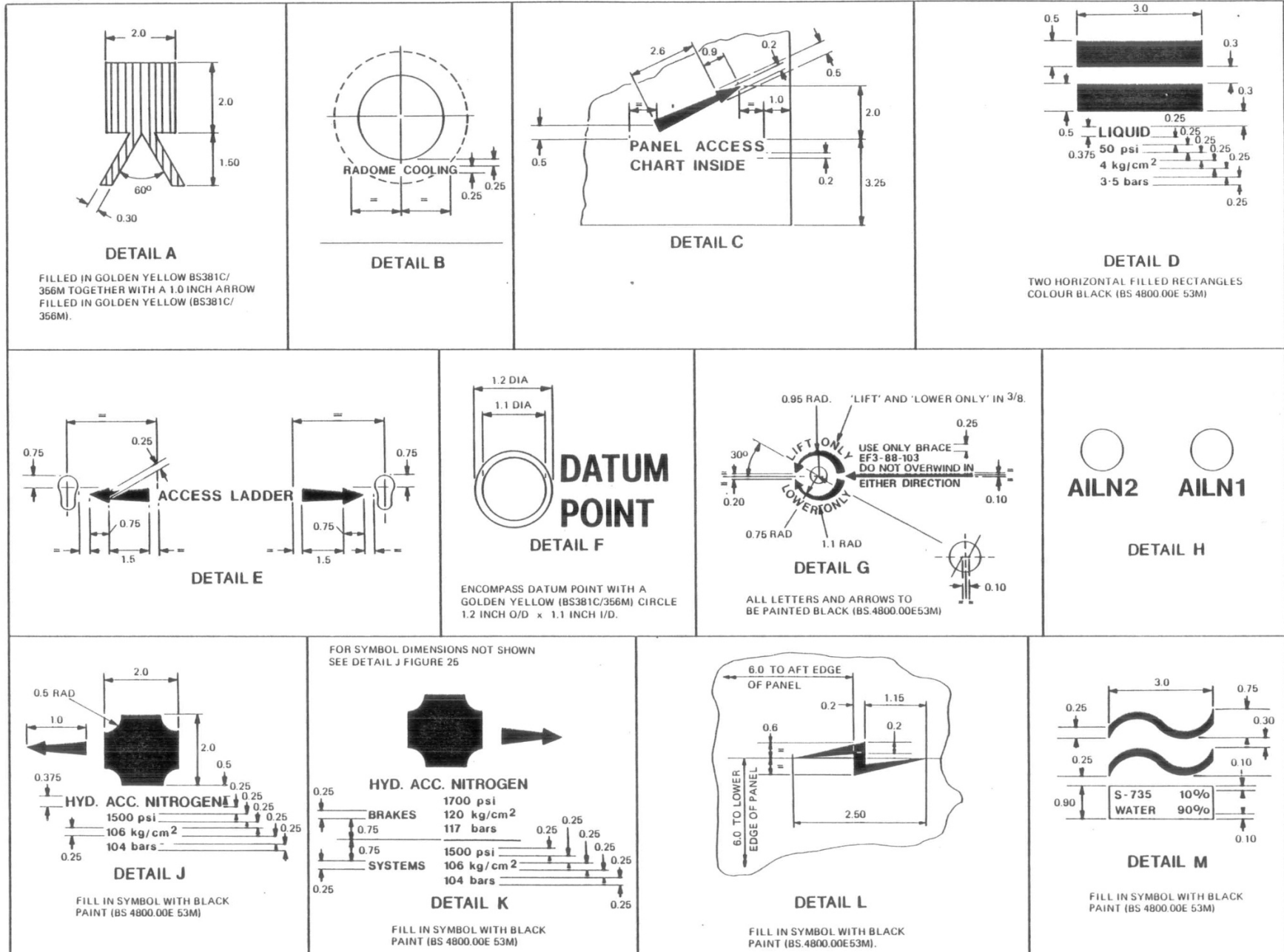


FIG. 25. DETAILS OF SERVICING MARKINGS

ALL DIMENSIONS IN INCHES

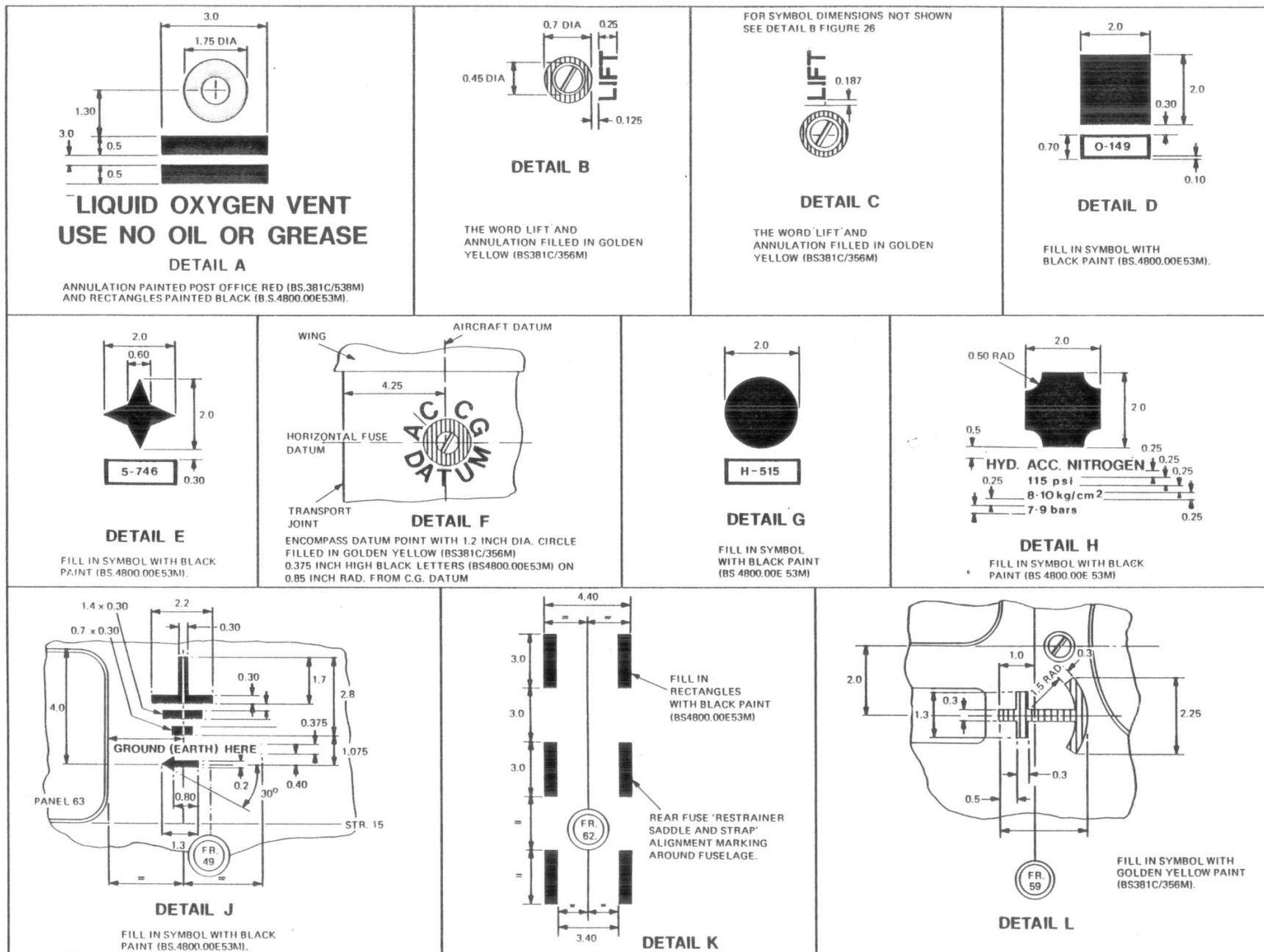
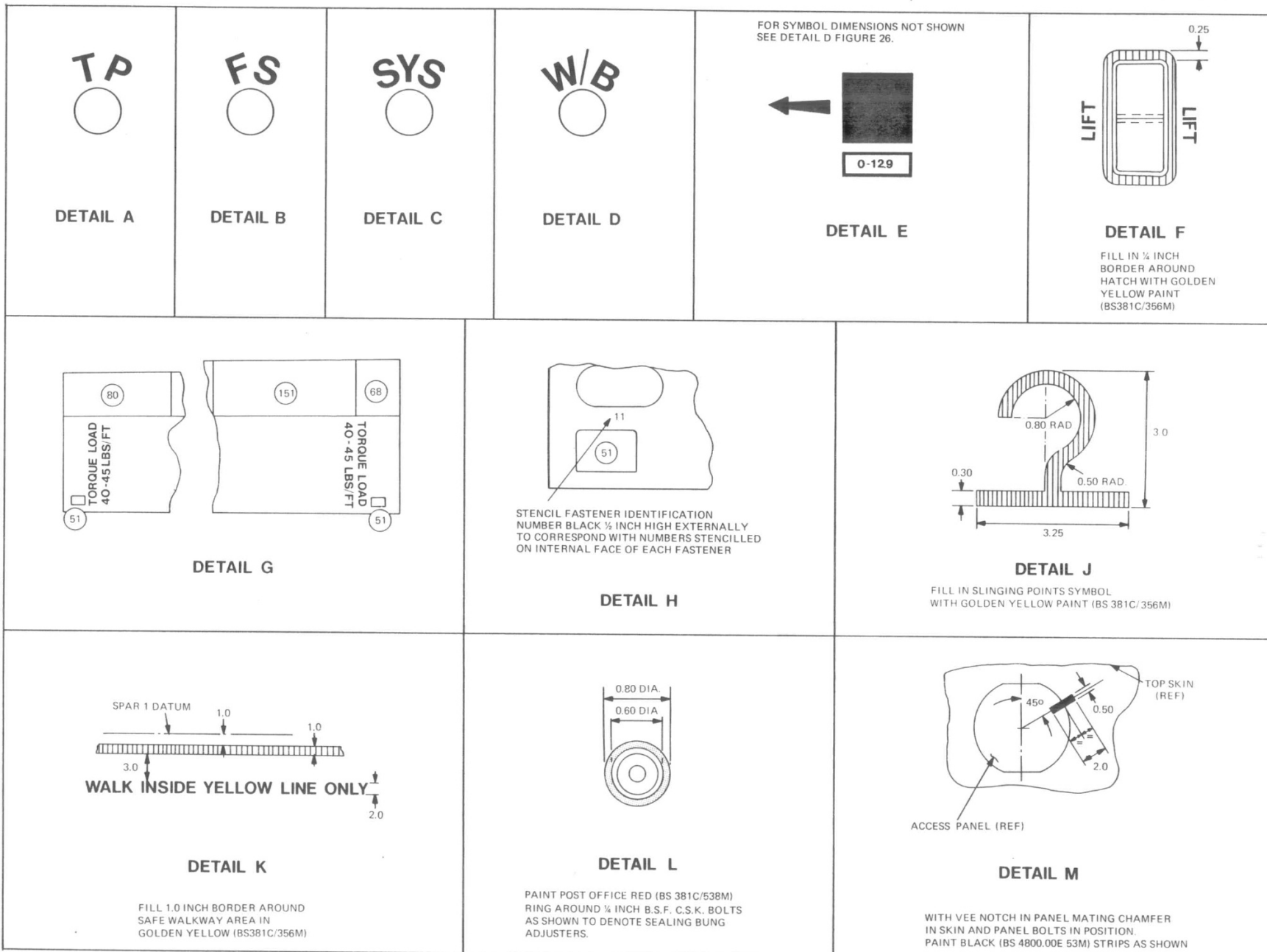


FIG. 26. DETAILS OF SERVICING MARKINGS

UK RESTRICTED



ALL DIMENSIONS IN INCHES.

FIG. 27. DETAILS OF SERVICING MARKINGS

UK RESTRICTED

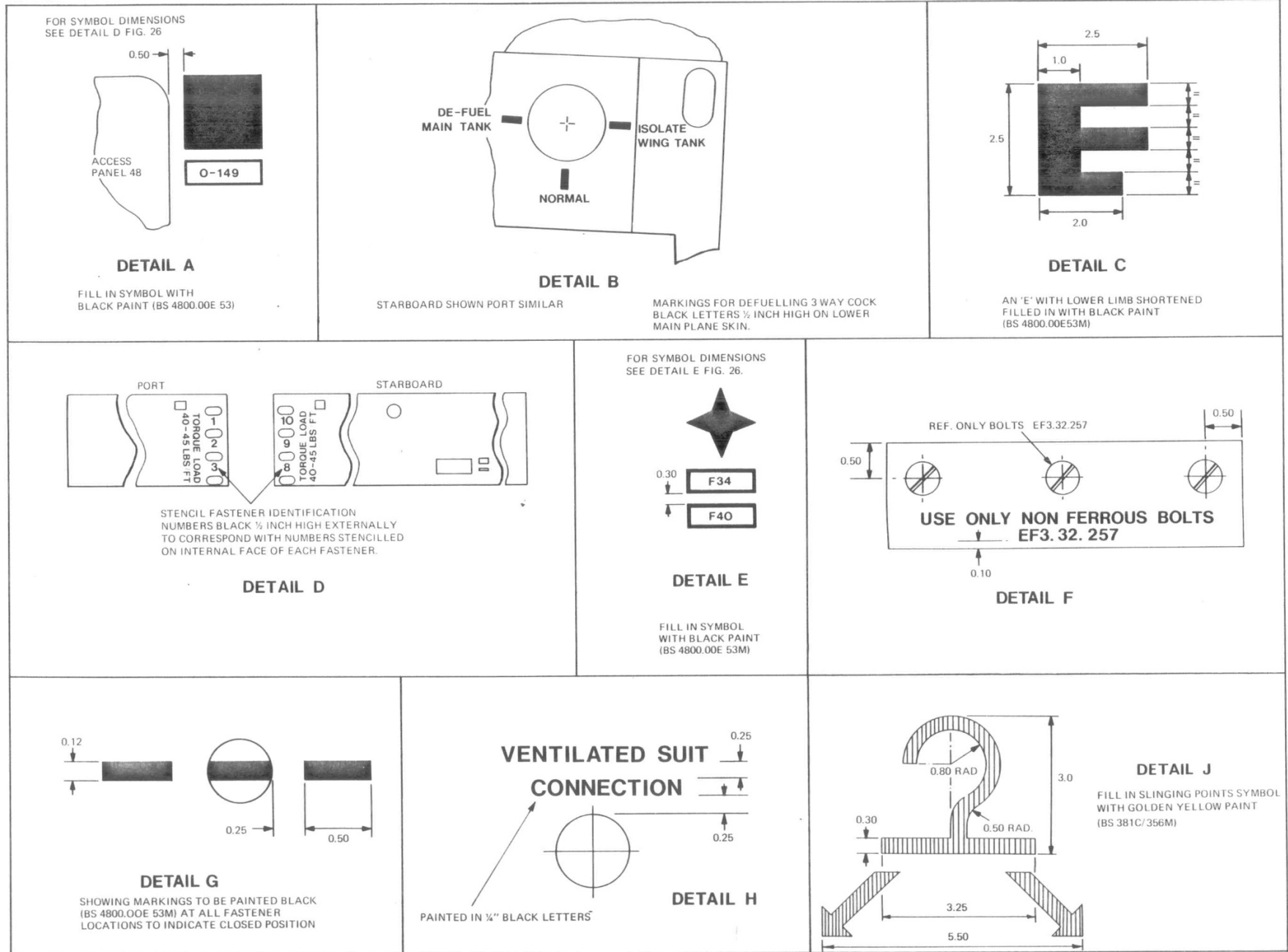


FIG. 28. DETAILS OF SERVICING MARKINGS

◀ DETAIL J ADDED ▶

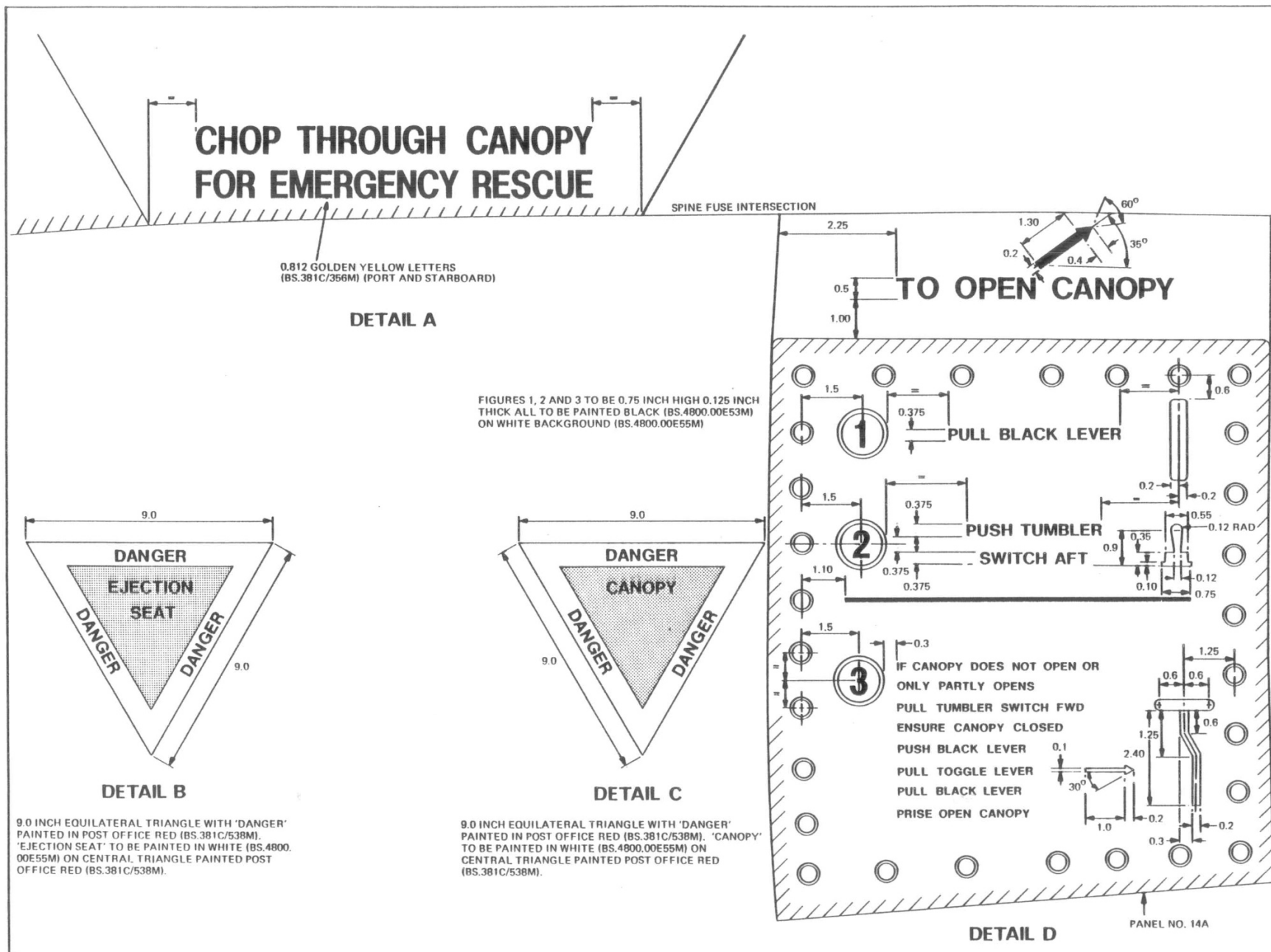


FIG. 30. DETAILS OF SAFETY AND SURVIVAL MARKINGS

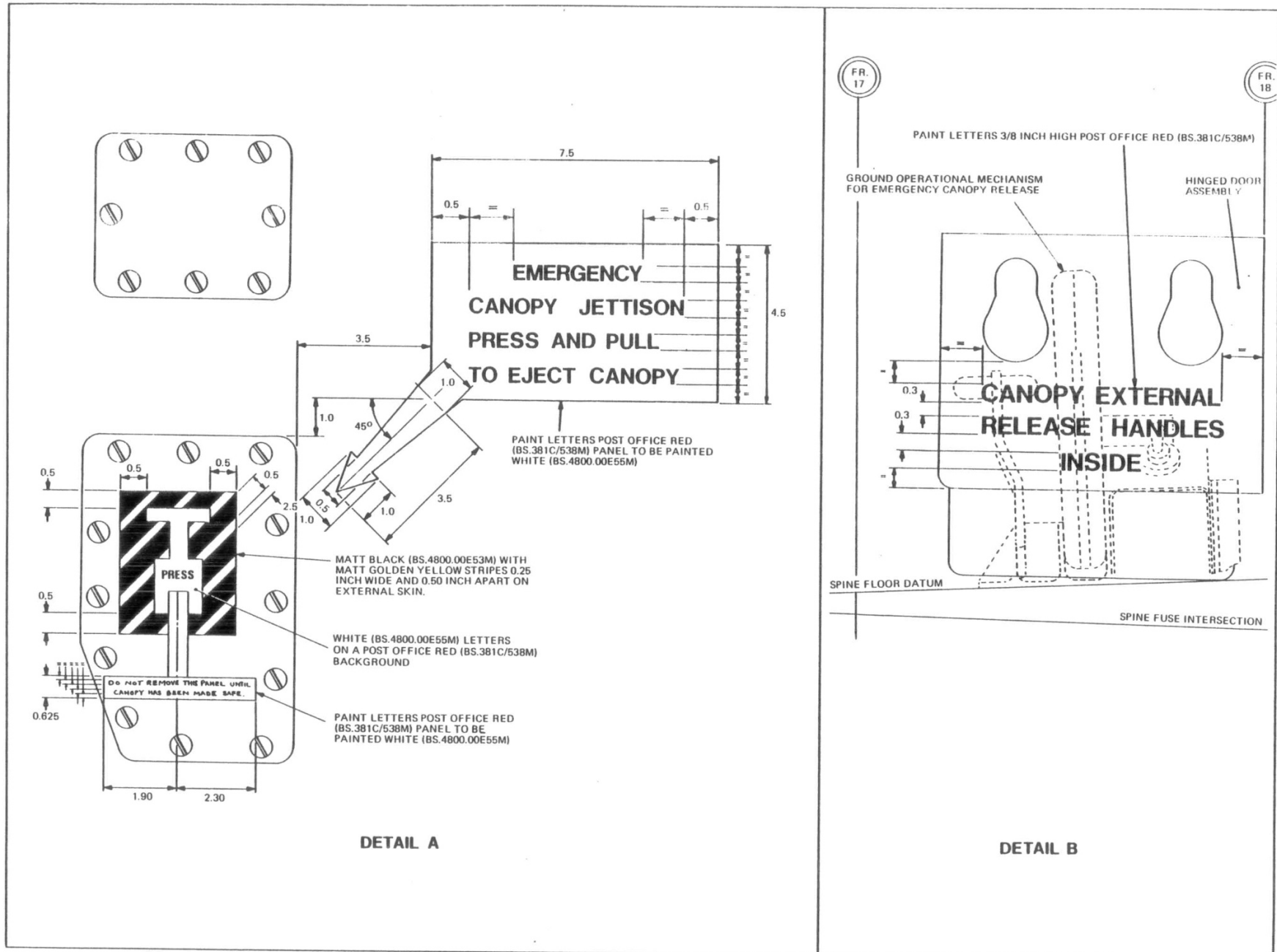


FIG. 31. DETAILS OF SAFETY AND SURVIVAL MARKINGS

ALL DIMENSIONS IN INCHES

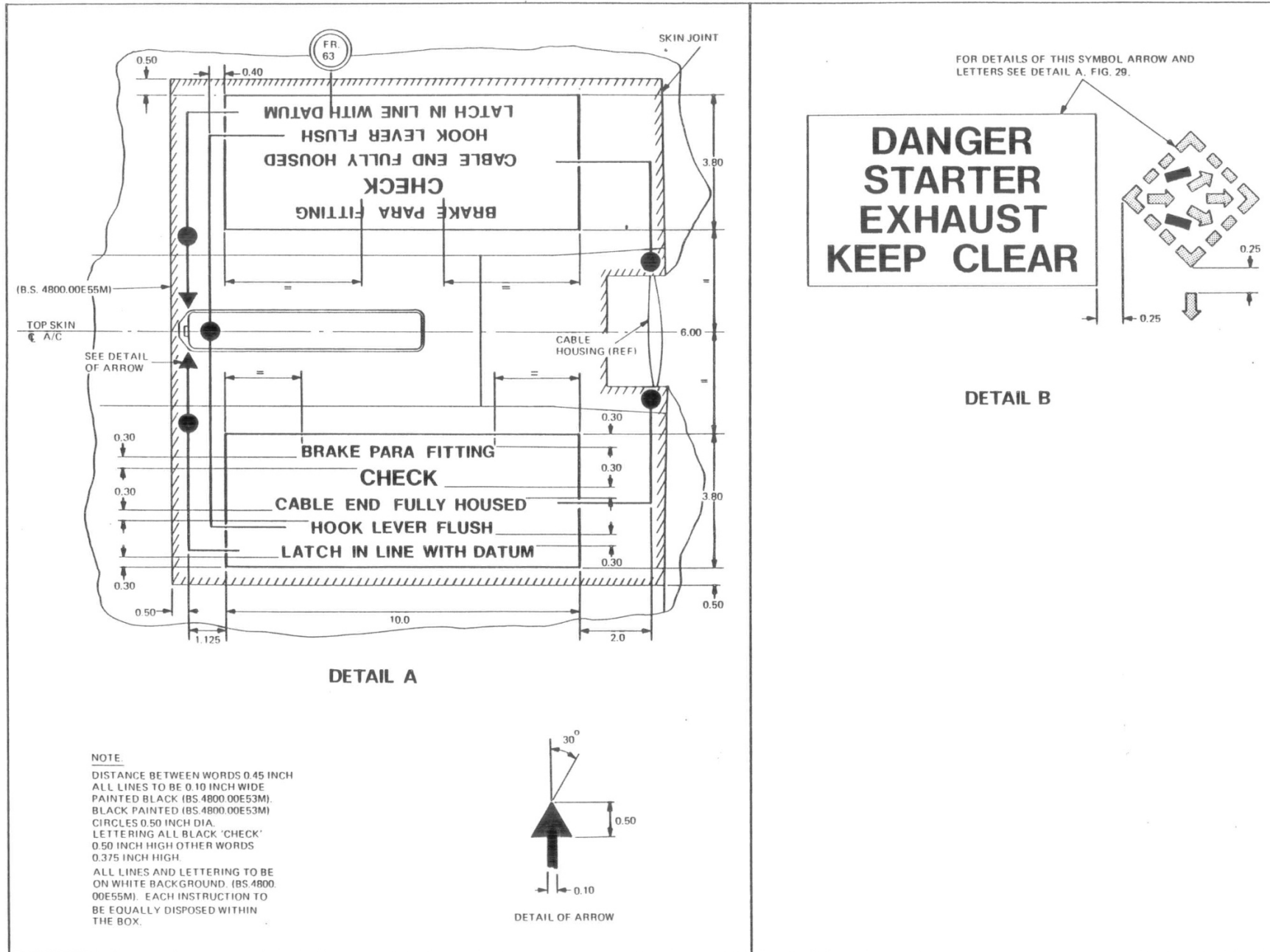


FIG. 32. DETAILS OF SAFETY AND SURVIVAL MARKINGS

ALL DIMENSIONS IN INCHES